

A white abstract line graphic starts at the top center, curves down and to the left, then curves back up and to the right, ending near the top right corner.

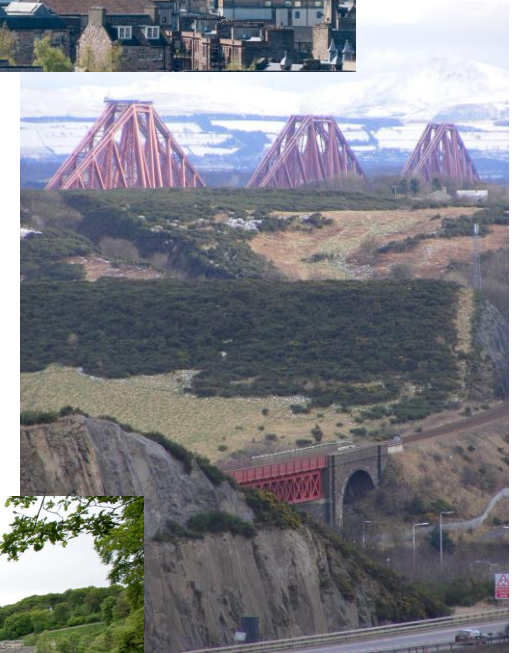
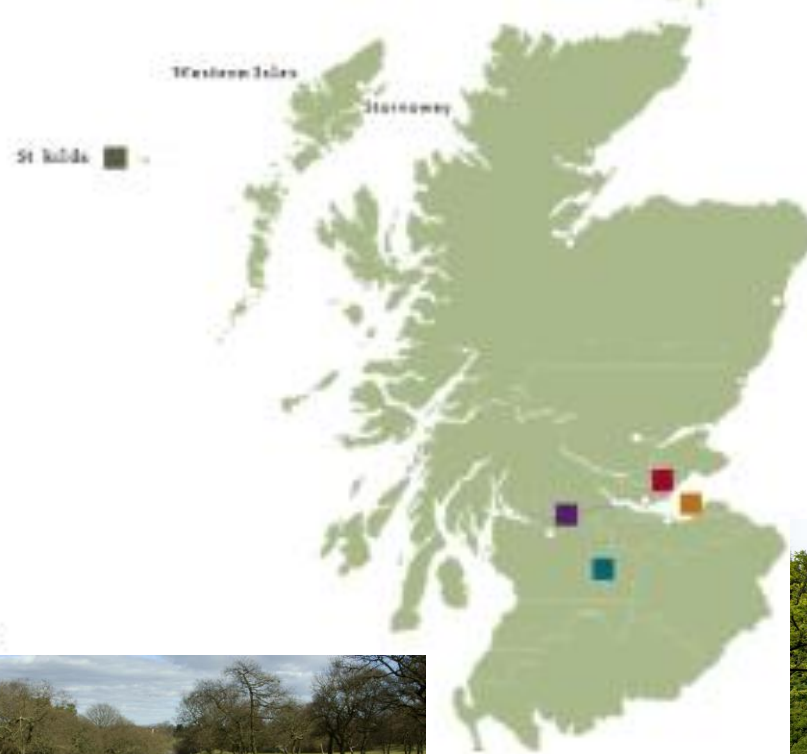
# SETTING THE SCENE FOR WORLD HERITAGE: A SCOTTISH OVERVIEW

JENNY BRUCE



HISTORIC  
ENVIRONMENT  
SCOTLAND

ÀRAINNEACHD  
EACHDRAIDHEIL  
ALBA



### World Heritage Sites in Scotland

KEY:

- Heart of Neolithic Orkney
- St Kilda
- Frontiers of the Roman Empire: Antonine Wall
- New Lanark
- Old and New Towns of Edinburgh
- Forth Bridge



© Crown Copyright HES



HISTORIC ENVIRONMENT SCOTLAND

ÀRAINNEACHD EACHDRAIDHEIL ALBA

# MANAGING CHANGE IN THE HISTORIC ENVIRONMENT

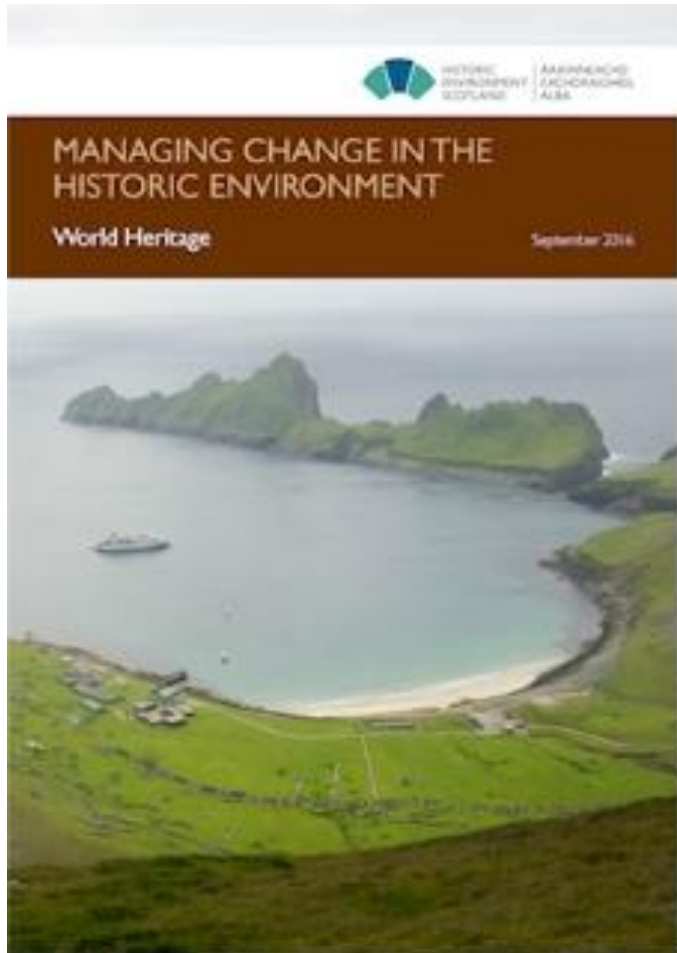
- **MANAGING CHANGE** is a series of non-statutory guidance notes about managing change in the historic environment explaining how to apply government policies
- The aim of the series is to identify the main issues which can arise in different situations and to advise how best to deal with these



- **SETTING** this note sets out the principles that apply to development affecting the setting of designated and undesignated sites, including scheduled monuments, gardens and designed landscapes and world heritage sites where a site's cultural significance may include aspects of setting
- **WORLD HERITAGE** this note sets out the principles that apply to developments affecting World Heritage Sites, and the roles and responsibilities that organisations have to care for and protect these Sites. It should inform planning policies and help with decisions relating to planning applications affecting sites

# MANAGING CHANGE IN THE HISTORIC ENVIRONMENT

## World Heritage

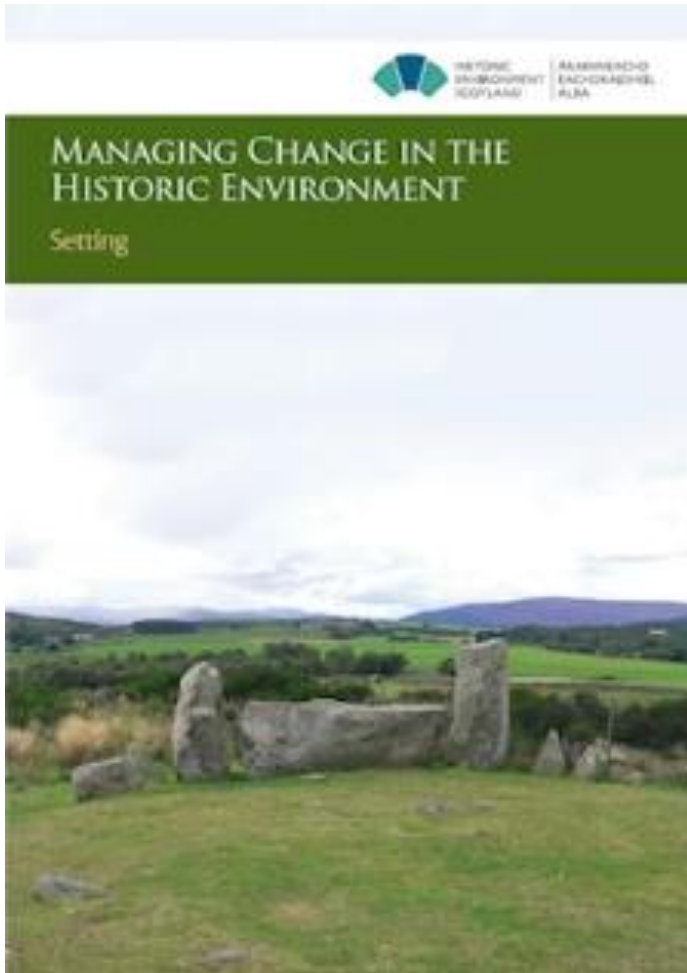


### Key issues

- The World Heritage List represents the most significant, unique or best examples of the world's cultural and natural heritage
- All World Heritage Sites have an associated Statement of Outstanding Universal Value (OUV), which explains the importance of the Site
- Each World Heritage Site has a Management Plan, which provides a framework for the long-term protection and sustainable management of the Sites OUV
- When changes are planned, adverse impacts should be avoided where possible and assessment should focus on the impact these changes could have on OUV
- Planning authorities should take World Heritage Sites into account when preparing Local Development Plans and making decisions on planning applications

# MANAGING CHANGE IN THE HISTORIC ENVIRONMENT

## Setting



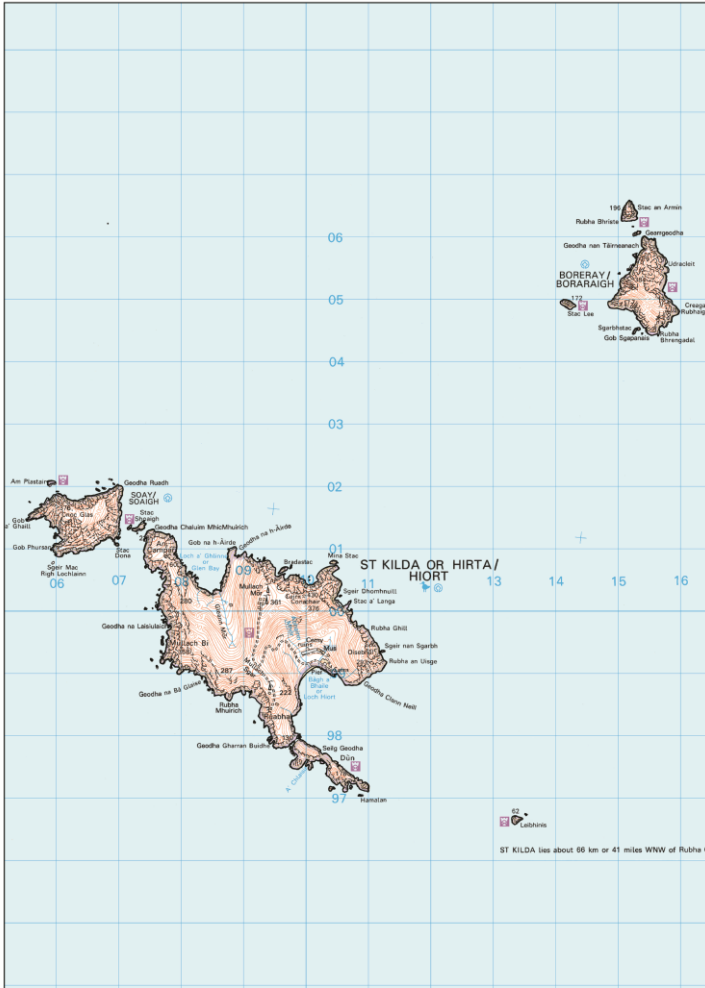
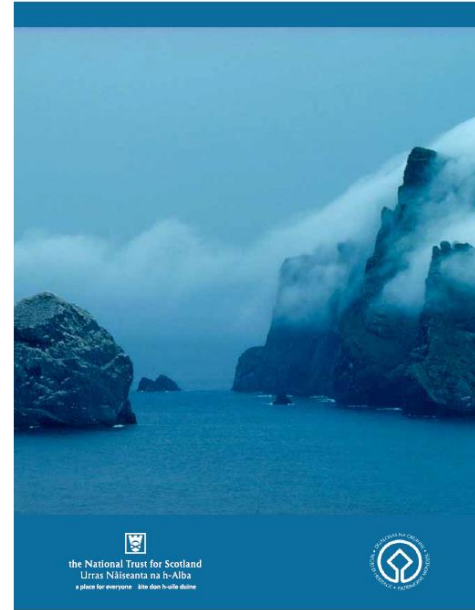
### Key issues

- Setting can be important to the way in which historic structures or places are **understood, appreciated** and **experienced**
- It can often be integral to a historic asset's cultural significance
- Planning authorities must take into account the setting of historic assets or places when drawing up plans and guidance, when considering environmental and design assessments, and when making decisions on planning applications
- Setting **often extends beyond the property boundary of an individual historic asset into a broader landscape**
- Both **tangible** and **less tangible elements** can be important in understanding setting

# ST KILDA

## ST KILDA

World Heritage Site  
Management Plan  
2012-17



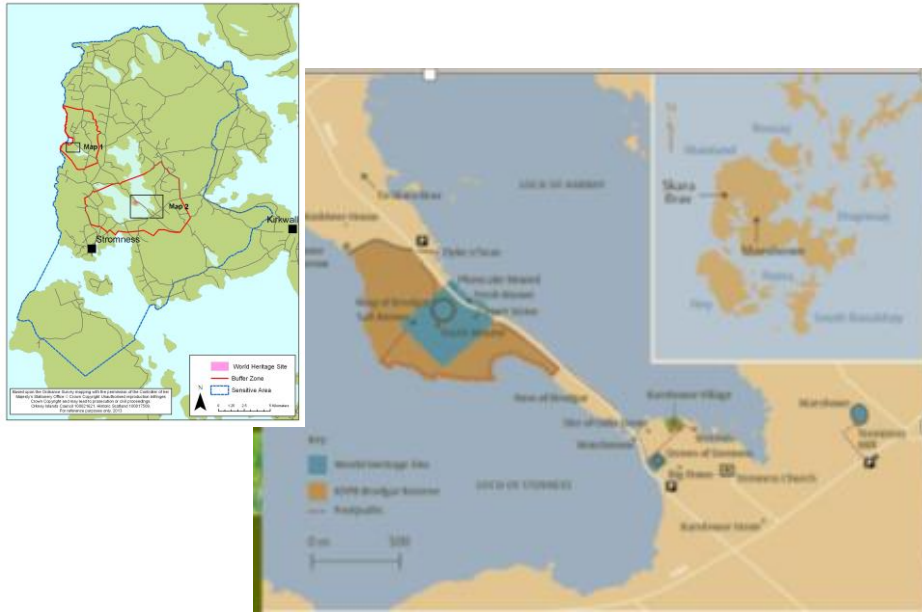
# ST KILDA



HISTORIC  
ENVIRONMENT  
SCOTLAND

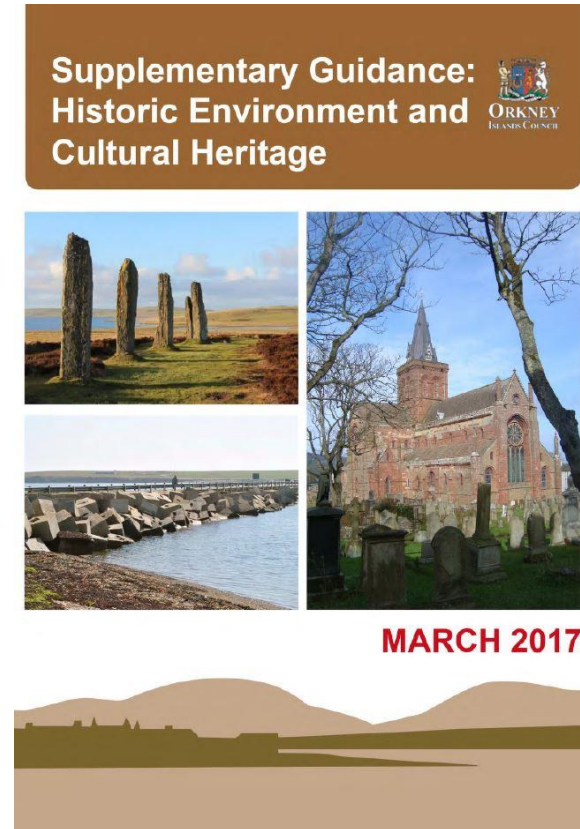
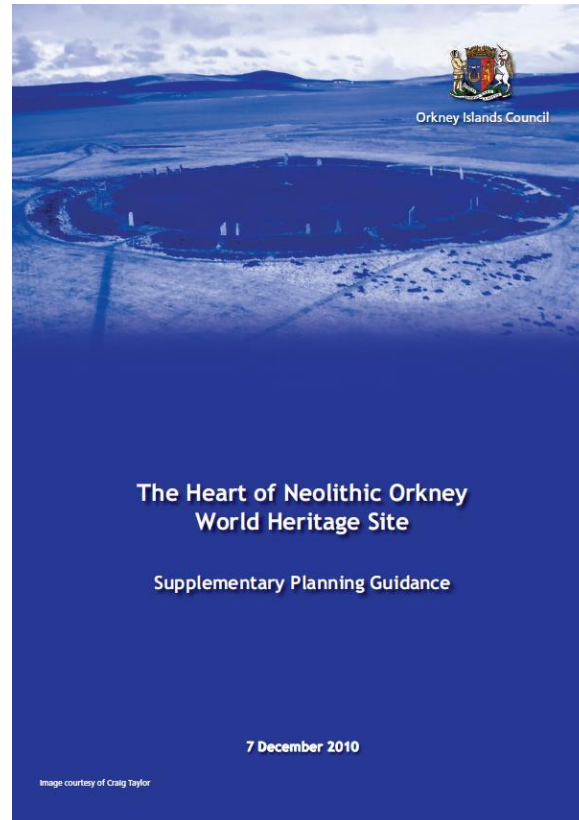
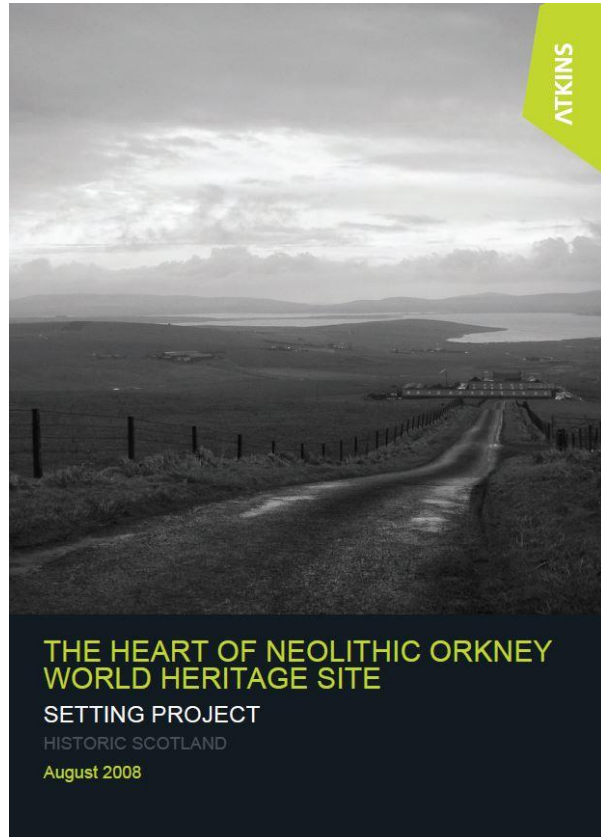
ÀRAINNEACHD  
EACHDRAIDHEIL  
ALBA

# THE HEART OF NEOLITHIC ORKNEY





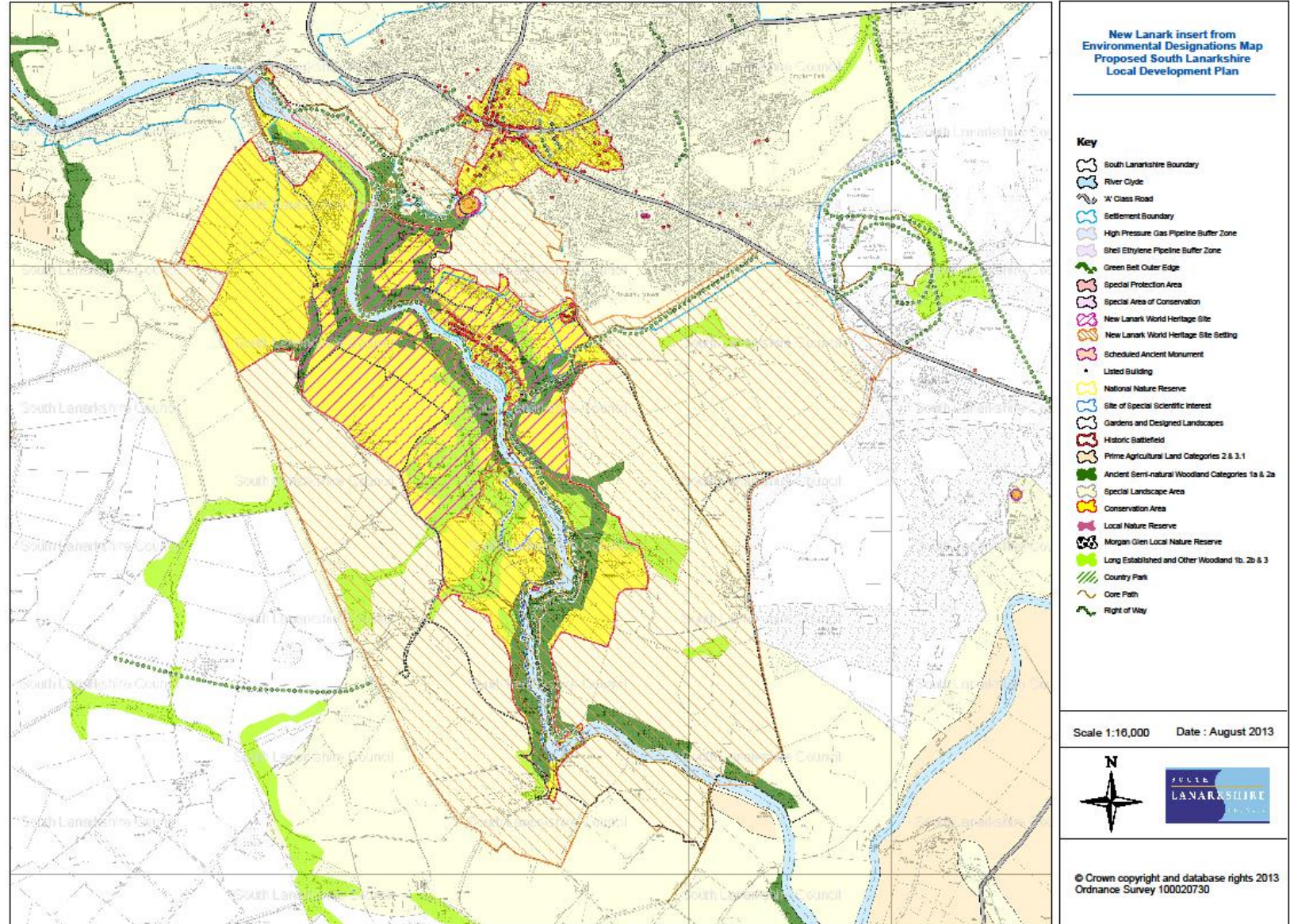
# THE HEART OF NEOLITHIC ORKNEY



# NEW LANARK



# NEW LANARK



# FRONTIERS OF THE ROMAN EMPIRE: THE ANTONINE WALL



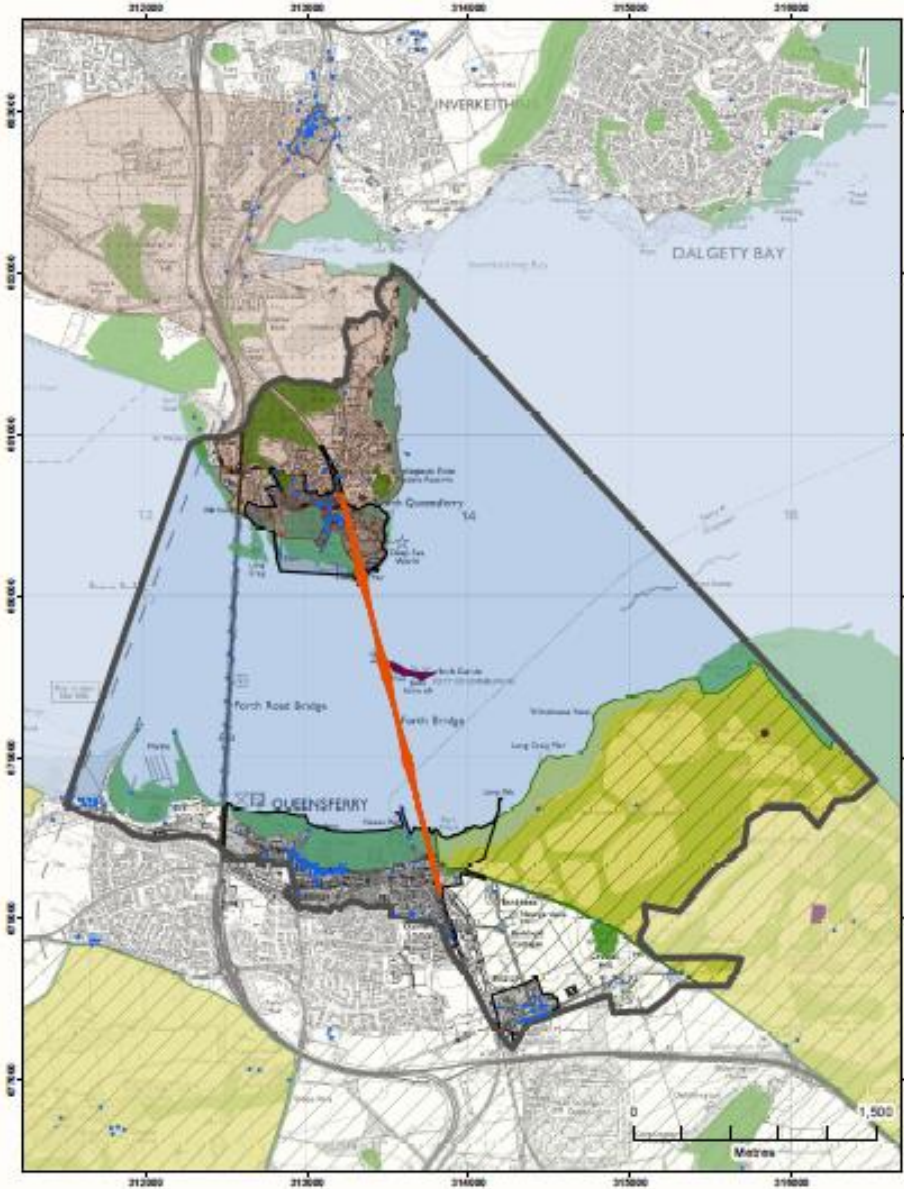
# FRONTIERS OF THE ROMAN EMPIRE: THE ANTONINE WALL



HISTORIC  
ENVIRONMENT  
SCOTLAND

ÀRAINNEACHD  
EACHDRAIDHEIL  
ALBA

# FORTH BRIDGE



**Title:**  
The Forth Bridge:  
Bridgehead Zone

**Scale:**  
1 : 30,000 @ A4

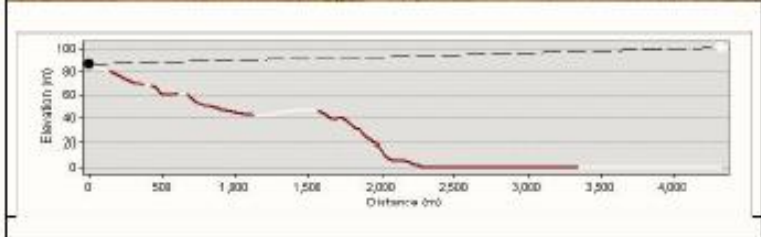
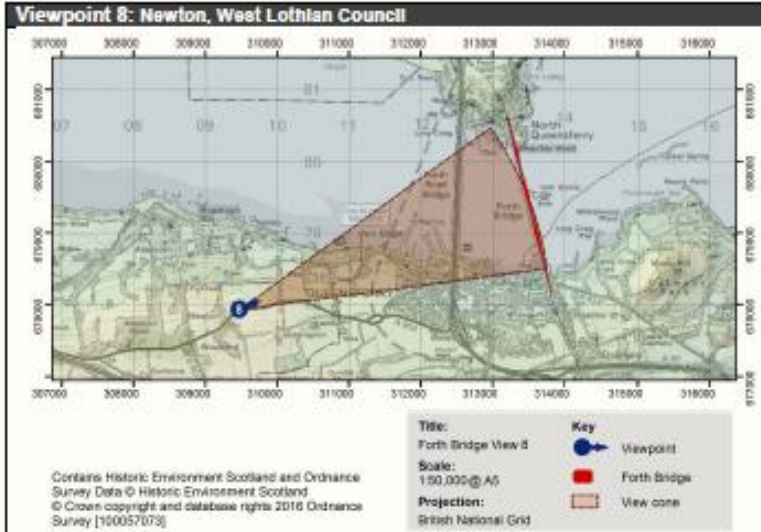
**Projection:**  
British National Grid

**Key**

Nominated Property	Listed Building
Bridgehead Zone Boundary	Scheduled Monument
Inventory Battlefield	Natural Heritage Protected Sites
Conservation Area	Marine Planning Area
Gardens and Designed Landscape	Green Belt



# FORTH BRIDGE



## The Forth Bridge World Heritage Site: Key Viewpoints



Prepared for the Forth Bridge World Heritage Management Group on behalf of the Forth Bridges Forum, October 2016



HISTORIC ENVIRONMENT SCOTLAND

ÀRAINNEACHD EACHDRAIDHEIL ALBA

# OLD AND NEW TOWNS OF EDINBURGH

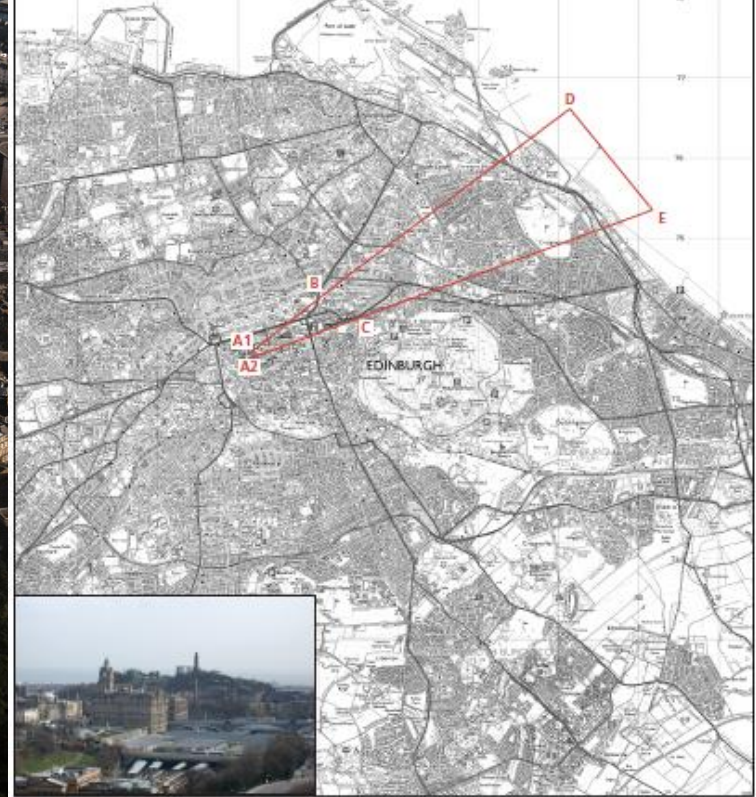


HISTORIC  
ENVIRONMENT  
SCOTLAND

ÀRAINNEACHD  
EACHDRAIDHEIL  
ALBA



# OLD AND NEW TOWNS OF EDINBURGH



HISTORIC  
ENVIRONMENT  
SCOTLAND

ÀRAINNEACHD  
EACHDRAIDHEIL  
ALBA

# LESSONS LEARNED: HOW SHOULD WE THINK ABOUT SETTING?

Diagram 1



Sources; GLVIA 3rd Edition. SNH Landscape Character Assessment Guidelines for England & Scotland. Managing Change in the Historic Environment Setting.