



World Heritage Sites and Setting

The view from Wales

Dr Kate Roberts

Principal Inspector of Ancient Monuments

Kathryn.Roberts@gov.wales





Outline

- Historic Environment Protection in Wales
- Setting of Historic Assets
- Putting it into Practice at WHS
- Castles and Town Walls of King Edward in Gwynedd
– case study

Deddf yr Amgylchedd Hanesyddol (Cymru) 2016 / The Historic Environment (Wales) Act 2016



Cadw



Deddf yr Amgylchedd Hanesyddol (Cymru) 2016

2016 dccc 4

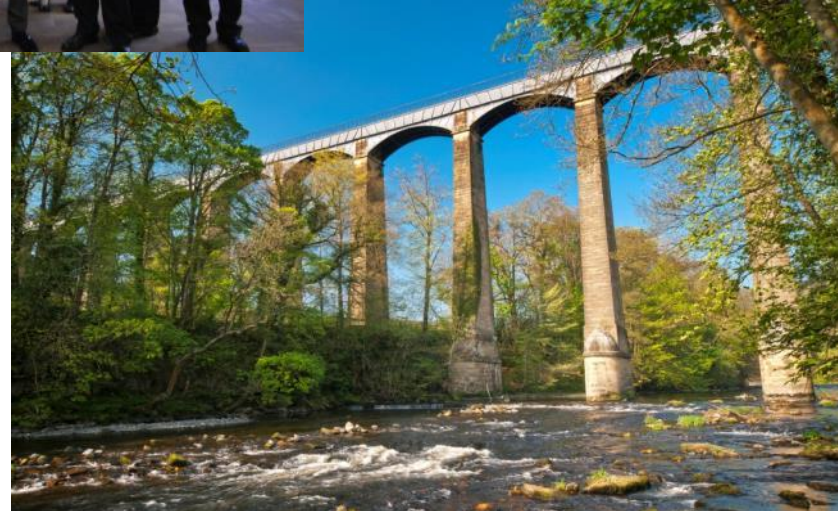
Historic Environment (Wales) Act 2016

2016 anaw 4

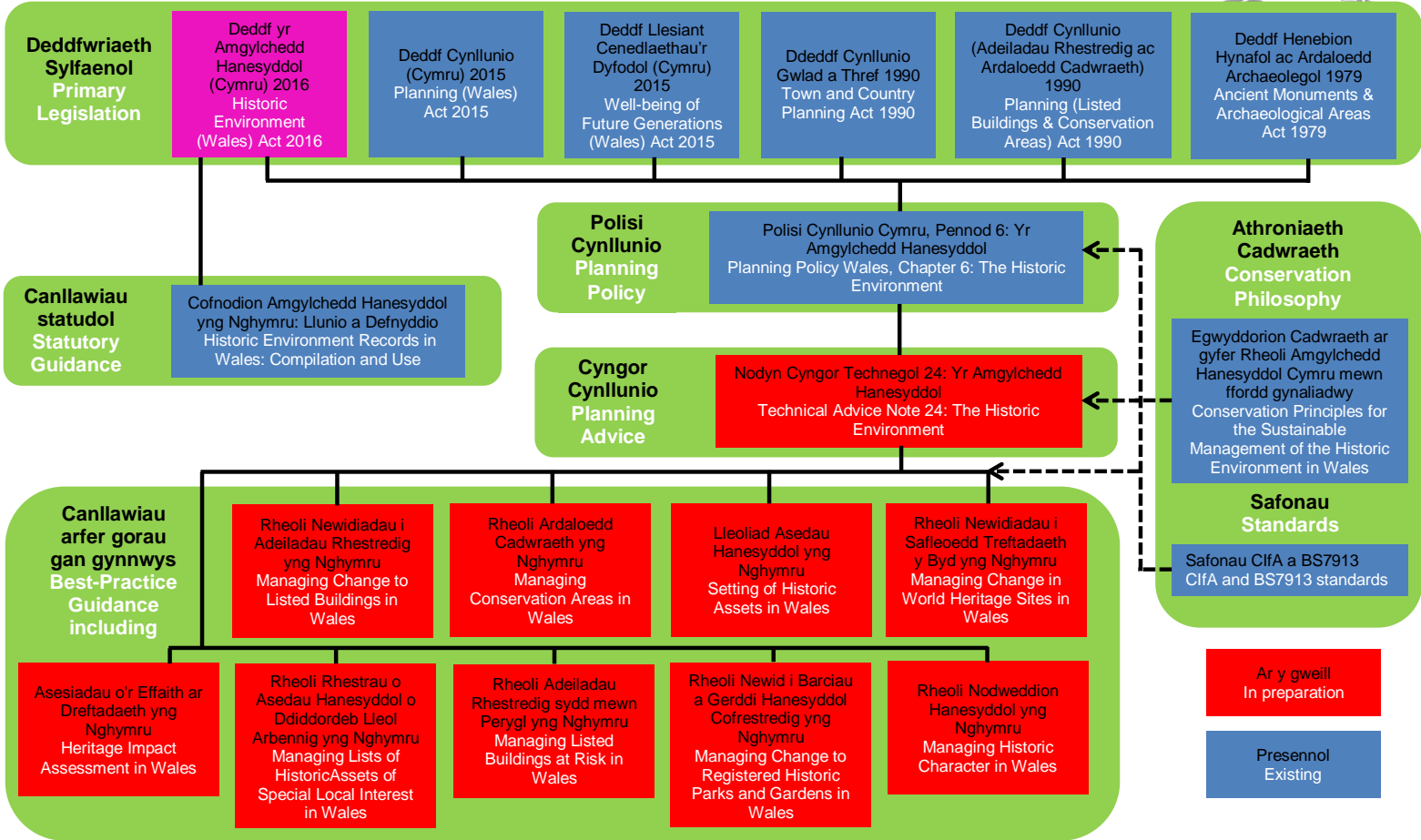
Llunirwyd Nodiadau Esboniadol yn gymorth i ddeall y Ddeddf hon ac maent ar gael ar wahan.

Explanatory Notes have been produced to assist in the understanding of this Act and are available separately.

£19.00



Yr hierarchaeth o ddeddfwriaeth, canllawiau cynllunio a chanllawiau arfer gorau sy'n ymwneud ag amgylchedd hanesyddol yng Nghymru
The hierarchy of legislation, planning guidance and best-practice guidance relating to the historic environment in Wales



Ar y gweill
In preparation

Presenol
Existing

Canllawiau arfer gorau gan gynnwys Best-Practice Guidance including

Rheoli Newidiadau i Adeiladau Rhestredig yng Nghymru
Managing Change to Listed Buildings in Wales

Rheoli Ardaloedd Cadwraeth yng Nghymru
Managing Conservation Areas in Wales

Lleoliad Asedau Hanesyddol yng Nghymru
Setting of Historic Assets in Wales

Rheoli Newidiadau i Safleoedd Treftadaeth y Byd yng Nghymru
Managing Change in World Heritage Sites in Wales

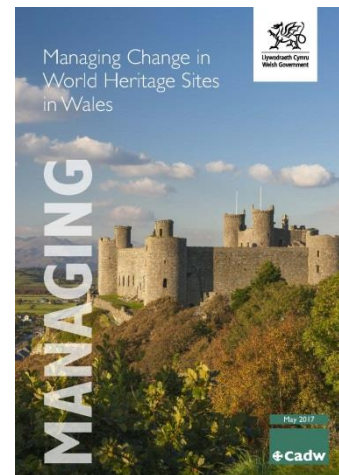
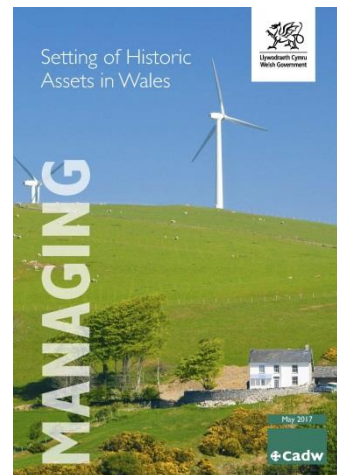
Asesiadau o'r Effaith ar Dreftadaeth yng Nghymru
Heritage Impact Assessment in Wales

Rheoli Rhestrau o Asedau Hanesyddol o Ddiddordeb Lleol Arbennig yng Nghymru
Managing Lists of Historic Assets of Special Local Interest in Wales

Rheoli Adeiladau Rhestredig sydd mewn Perygl yng Nghymru
Managing Listed Buildings at Risk in Wales

Rheoli Newid i Barciau a Gerddi Hanesyddol Cofrestredig yng Nghymru
Managing Change to Registered Historic Parks and Gardens in Wales

Rheoli Nodweddion Hanesyddol yng Nghymru
Managing Historic Character in Wales





Setting of Historic Assets in Wales

The setting of a historic asset includes the surroundings in which it is understood, experienced and appreciated, embracing present and past relationships to the surrounding landscape. Its extent is not fixed and may change as the asset and its surroundings evolve. Elements of a setting may make a positive, negative or neutral contribution to the significance of an asset.

The setting can include physical elements of its surroundings and less tangible elements (function, sensory perceptions or historical, artistic, literary and scenic associations).



4 Stage Evaluation Process

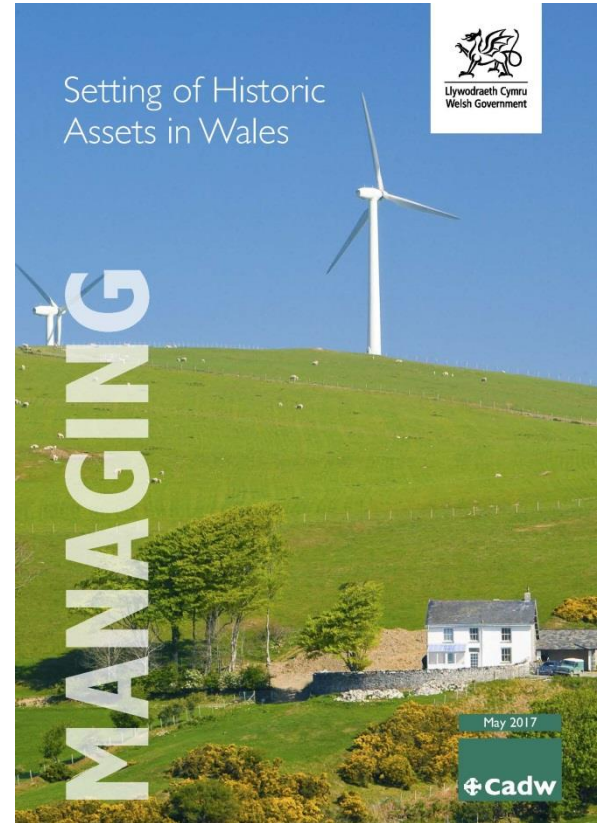
Stage 1: Identify the Historic Assets

Stage 2: Define and analyse the setting (*identify the key factors which contribute to the significance of the historic asset(s)*)

Stage 3: Evaluate the potential impact of change or development

Stage 4: Consider options to mitigate the impact

(Offsetting should not be accepted as mitigation)





Cadw

Putting it together – managing setting and WHS in Wales

Buffer Zones

Essential Settings

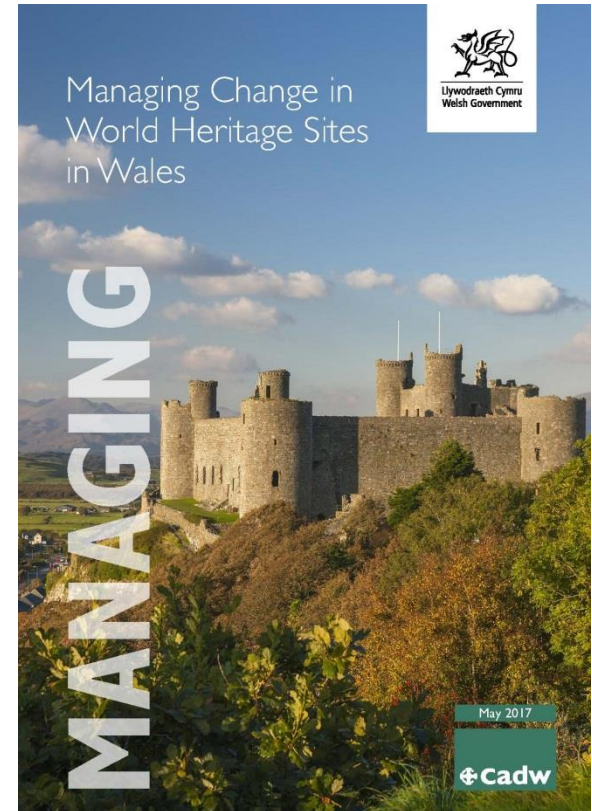
Register of Historic Landscapes

Landscape Characterisation

Urban Characterisation

ASIDOHL(2)

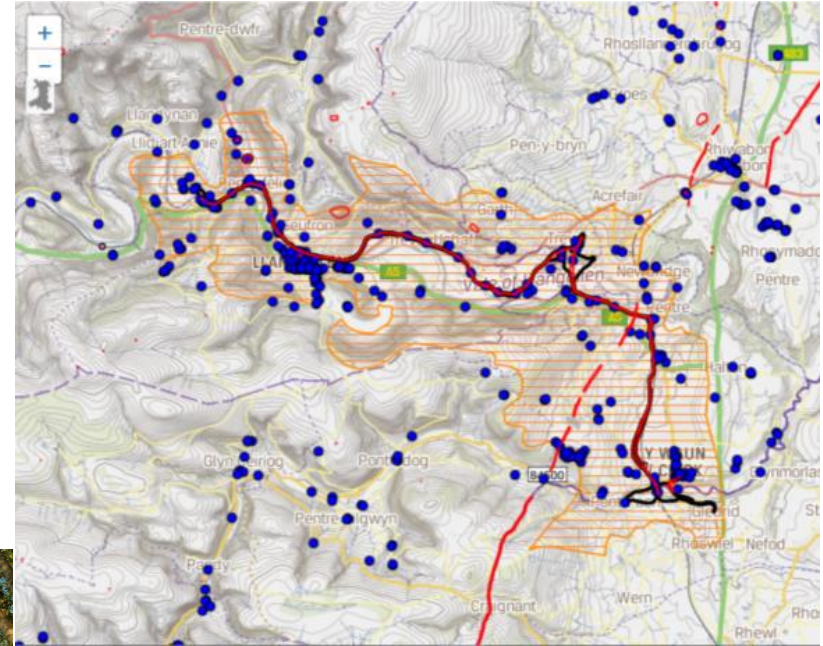
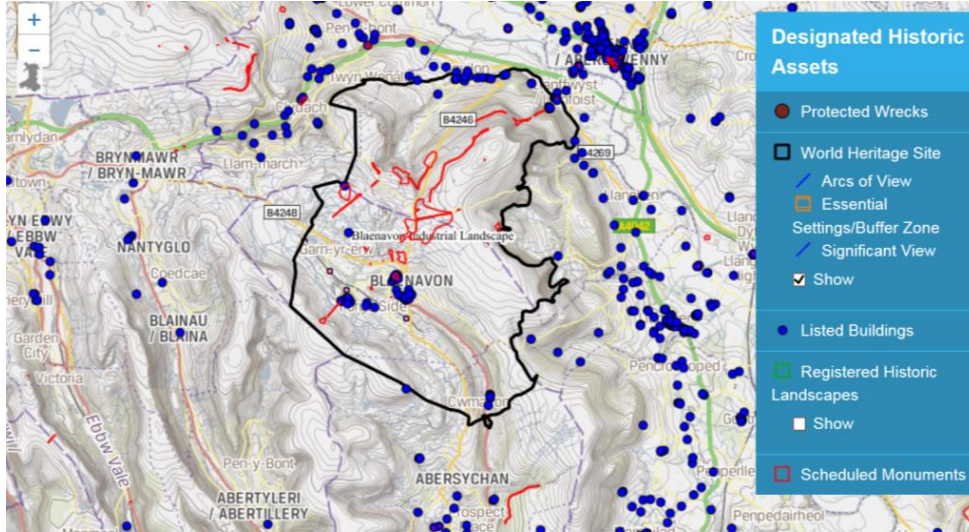
Heritage Impact Assessment



Blaenavon Industrial Landscape WHS



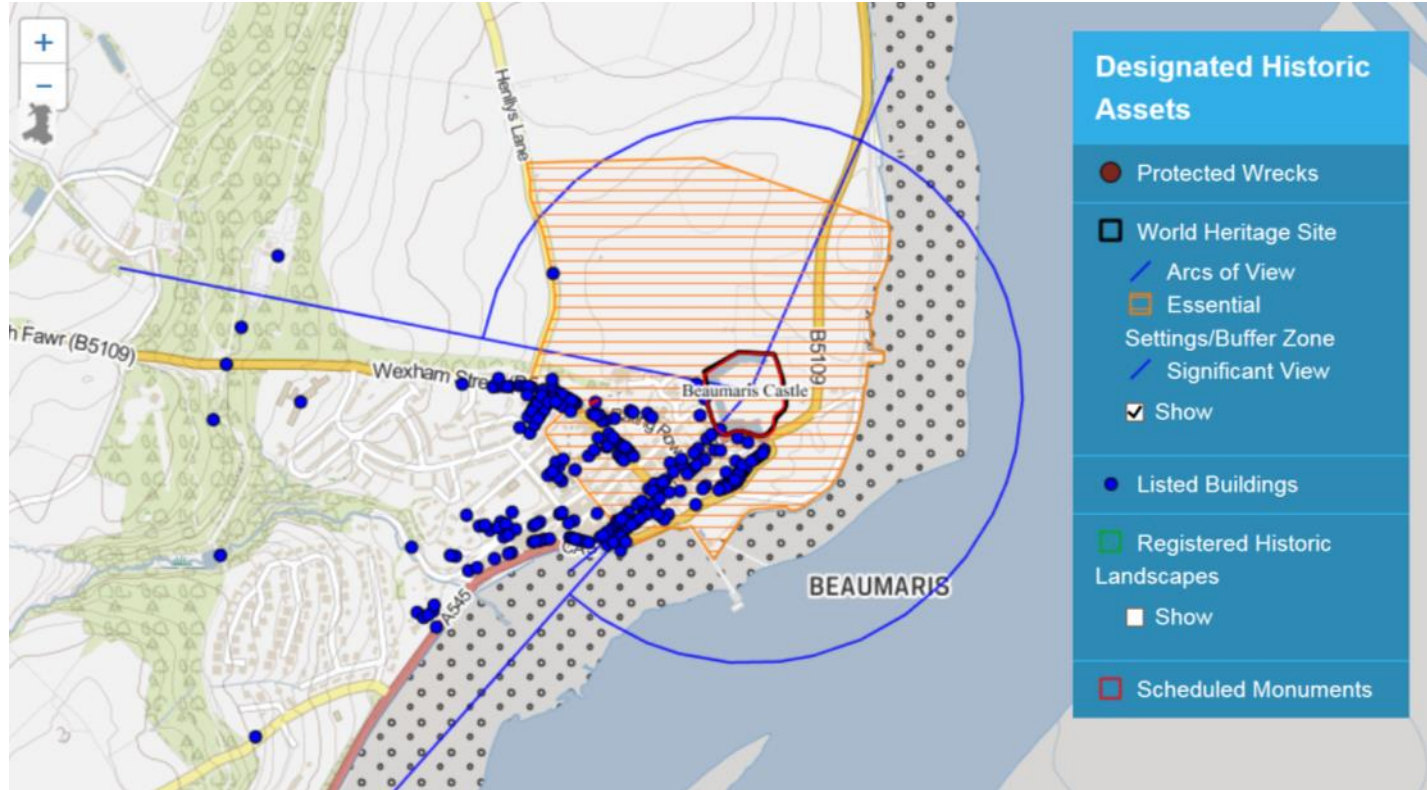
Cadw



Pontcysyllte Aqueduct and Canal WHS

Castles and Town Walls of King Edward in Gwynedd

Beaumaris Castle



Castles and Town Walls of King Edward in Gwynedd





Castles and Town Walls of King Edward in Gwynedd

The setting **encompasses the relationship between the castles and their townscapes and landscapes**. Also includes three specific elements:

- A mapped area of **essential setting** which refers to areas where inappropriate development would damage either the visual or historic setting of the WHS
- The identification of **significant views** at each location
- A **sense of arrival** at each location



Cadw



Conwy Castle and Town Walls





Cadw





Cadw





Cadw



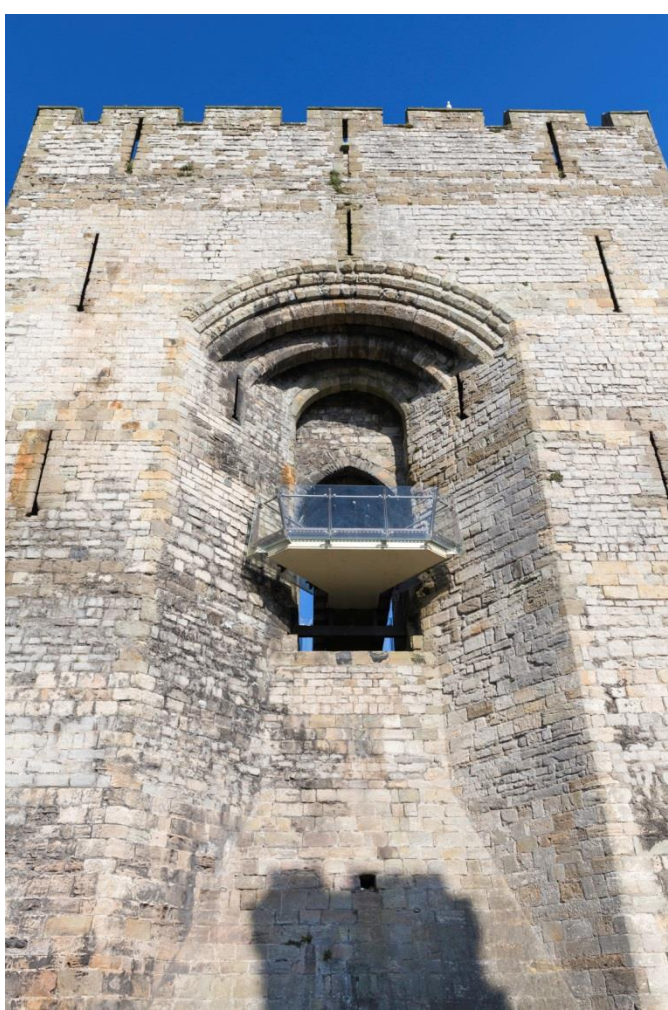


Cadw





Cadw





World Heritage Sites and Setting

The view from Wales

Dr Kate Roberts

Principal Inspector of Ancient Monuments

Kathryn.Roberts@gov.wales

