

LICHFIELDS

World Heritage UK:

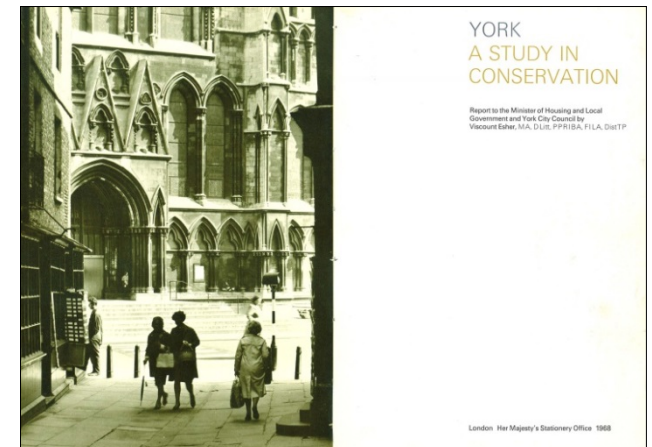
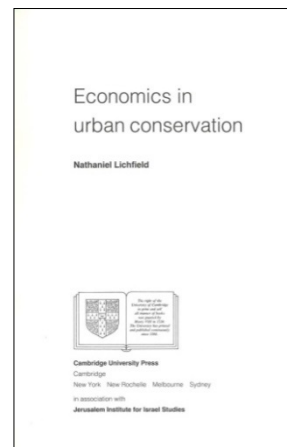
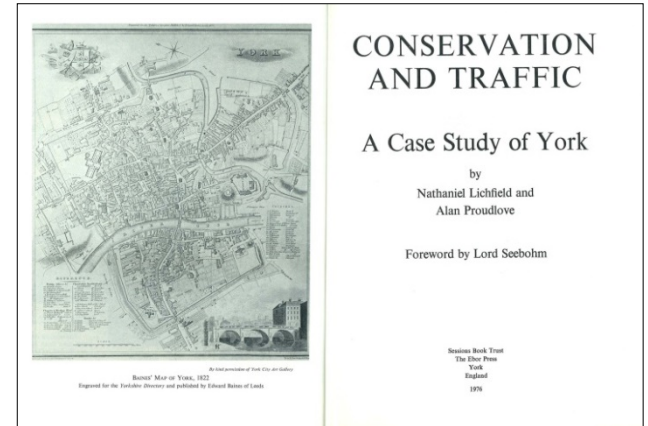
Technical Workshop

Nick Bishop

8 March 2017

Heritage at Lichfields

- **Over 50 years of heritage experience**
- **Nat Lichfield:**
 - **Economics and Conservation**
 - **Heritage and Conservation Studies**



What we do

- **Applications for statutory consents**
- **Heritage Impact Assessments for development affecting setting**
- **Heritage Partnership Agreements**
- **Assessment of buildings for statutory and local listing**
- **Working closely with other heritage specialists – e.g. architects, archaeologists and art historians**
- **Conservation area appraisals for LPAs**
- **Support for grant funding applications**
- **Cultural heritage, townscape and visual impact assessments for EIA**

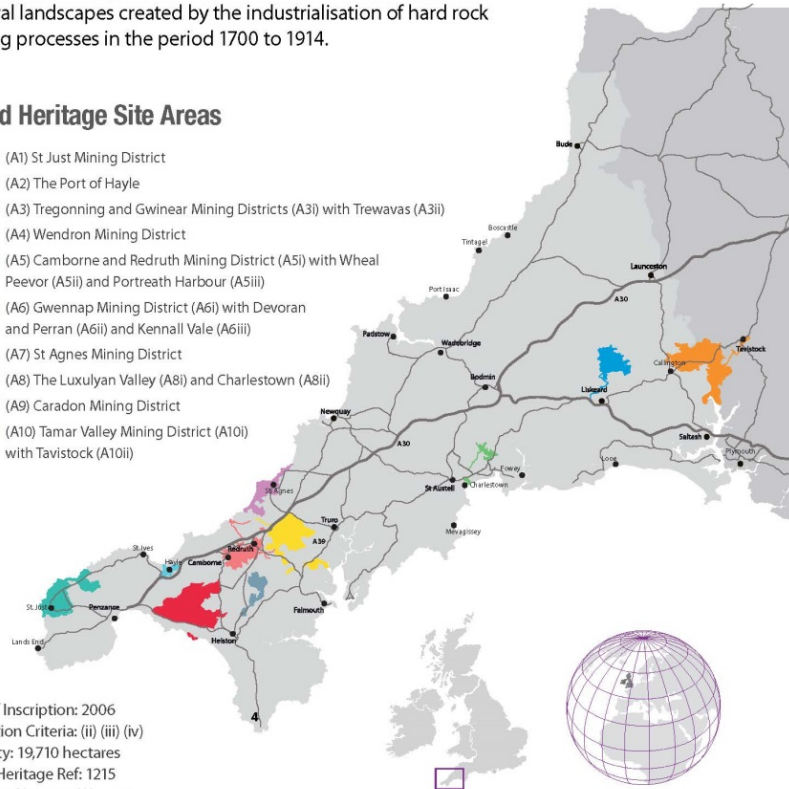
Cornish Mining Landscape

3.1 Summary

The Cornish Mining World Heritage Site is a series of 10 Areas comprising the distinctive patterns of buildings, monuments and sites which together form the coherent series of distinctive cultural landscapes created by the industrialisation of hard rock mining processes in the period 1700 to 1914.

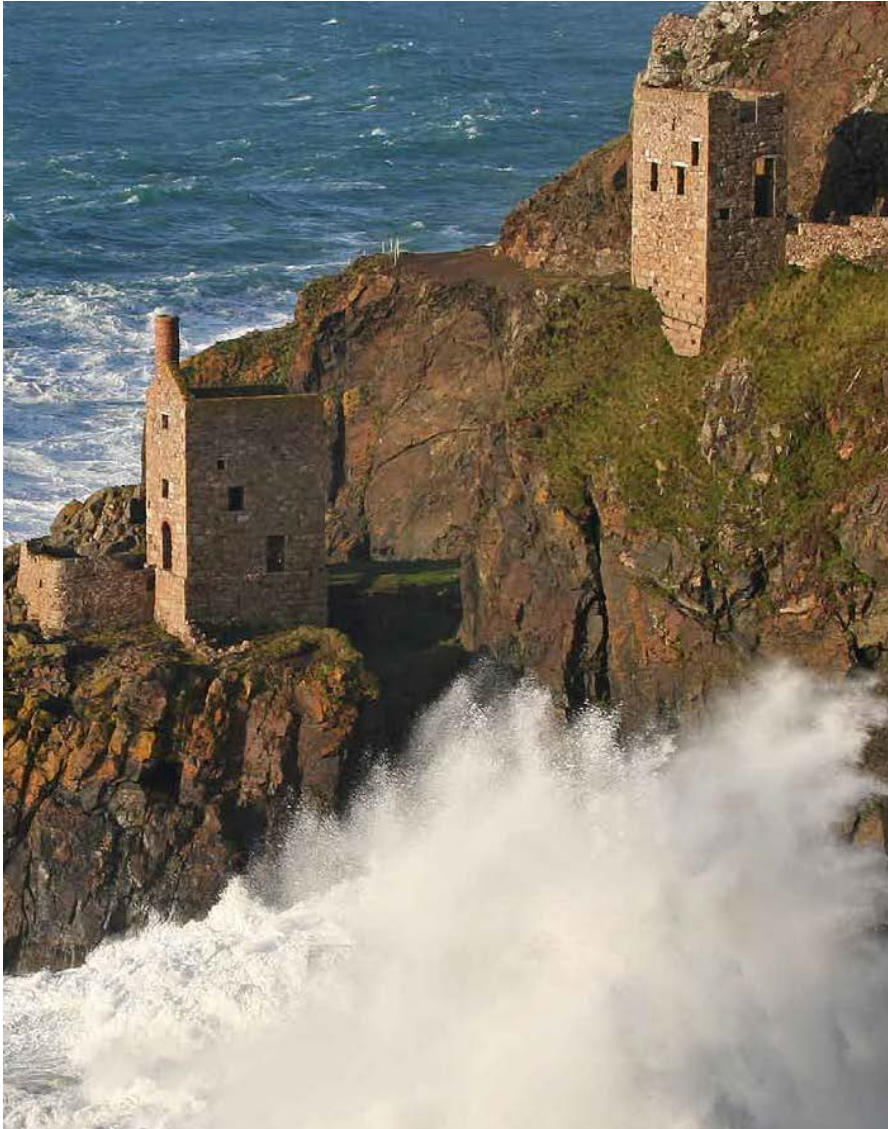
World Heritage Site Areas

-  (A1) St Just Mining District
-  (A2) The Port of Hayle
-  (A3) Tregonning and Gwinear Mining Districts (A3i) with Trewavas (A3ii)
-  (A4) Wendron Mining District
-  (A5) Camborne and Redruth Mining District (A5i) with Wheal Peevor (A5ii) and Portreath Harbour (A5iii)
-  (A6) Gwennap Mining District (A6i) with Devoran and Perran (A6ii) and Kennall Vale (A6iii)
-  (A7) St Agnes Mining District
-  (A8) The Luxulyan Valley (A8i) and Charlestown (A8ii)
-  (A9) Caradon Mining District
-  (A10) Tamar Valley Mining District (A10i) with Tavistock (A10ii)



Date of Inscription: 2006
Inscription Criteria: (ii) (iii) (iv)
Property: 19,710 hectares
World Heritage Ref: 1215
Location: N50 8 10 W5 23 1
<http://whc.unesco.org/en/list/1215>

Outstanding Universal Value



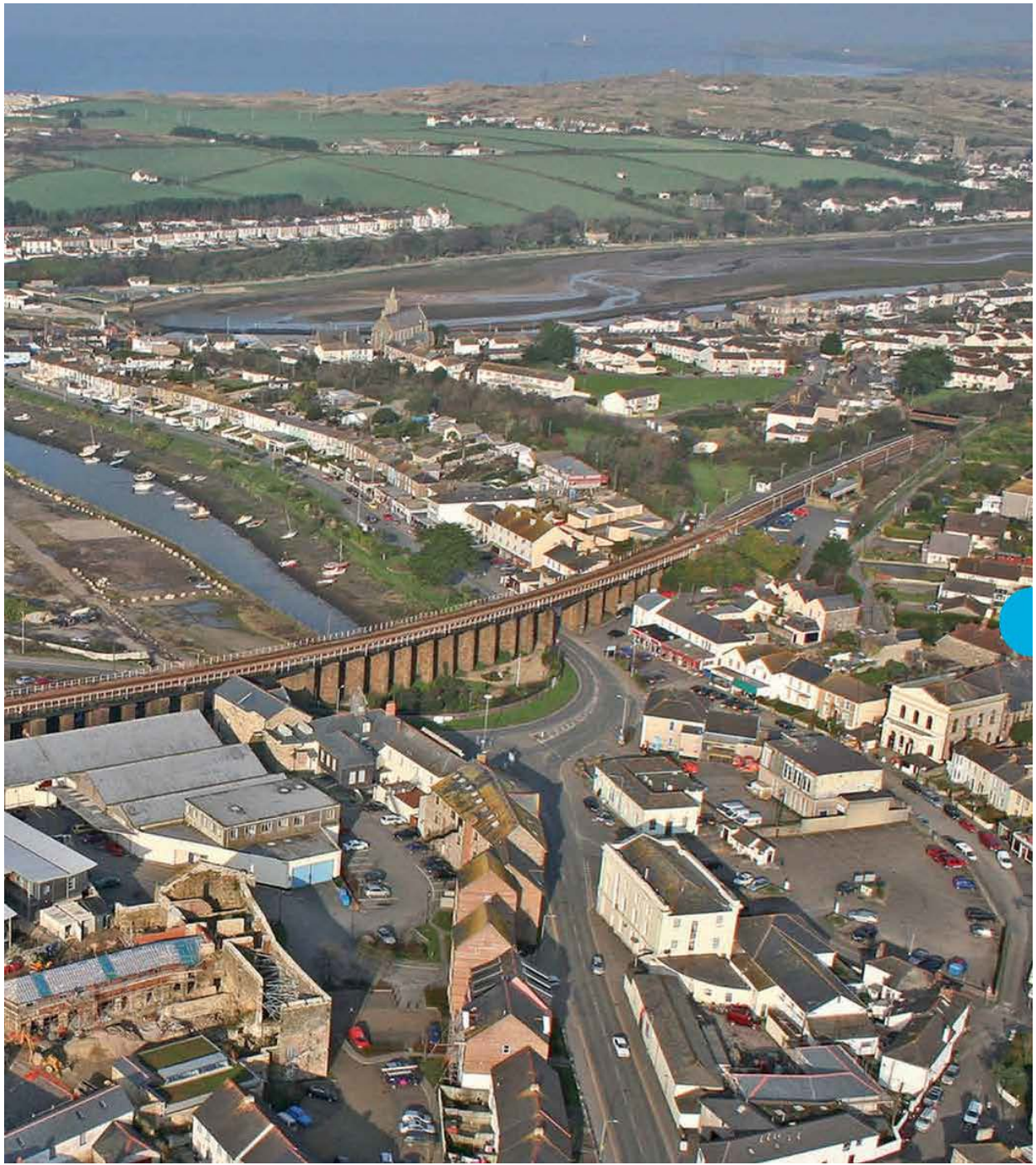
- **Industrial Expansion**
- **Prolific Innovation**
- **Sophistication and Success of large scale non-ferrous hard rock mining**



The conserved pumping engine house at Towanroath Shaft, Wheal Coates, St Agnes, possibly the most photographed Cornish engine house in the world



The tunnel portal of the Tavistock Canal





Above: The Miners & Mechanics Institute

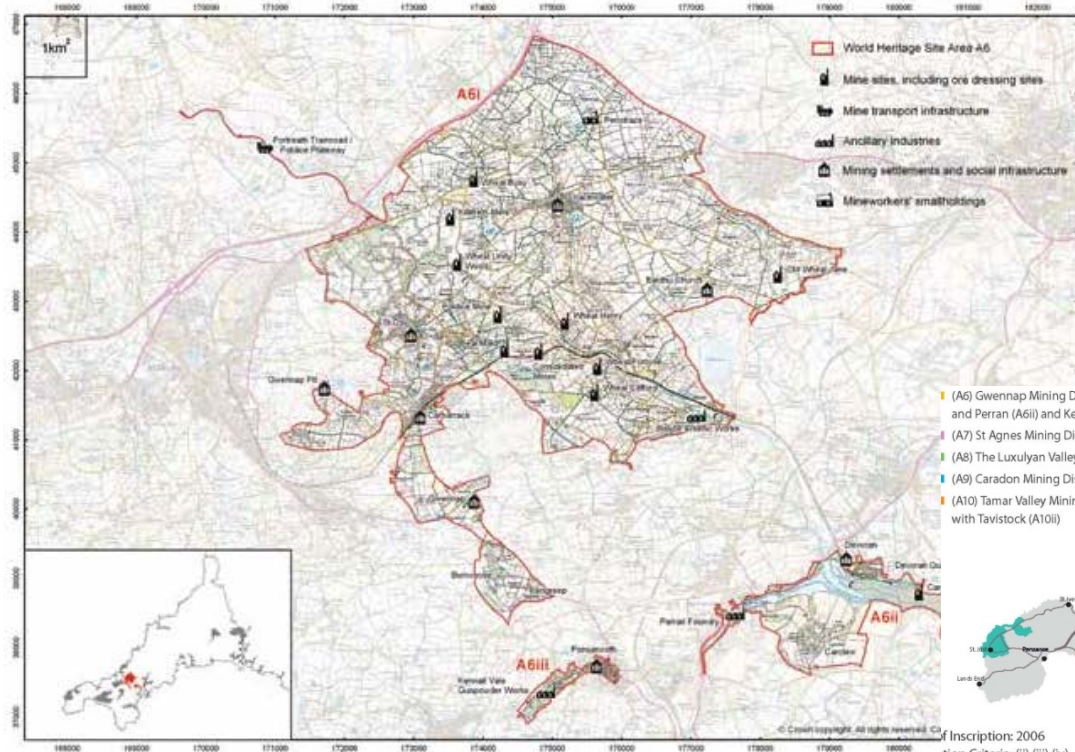




West Bridge Cottages, Tavistock

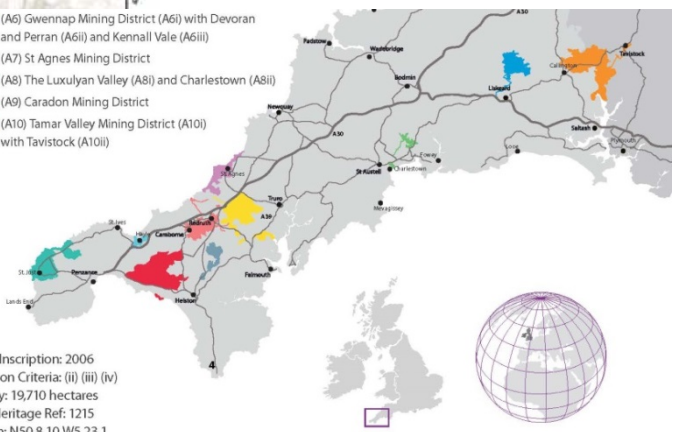
Gwenapp District

Gwennap Mining District with Devoran Perran and Kennall Vale - Principal Sites



- (A6) Gwennap Mining District (A6i) with Devoran and Perran (A6ii) and Kennall Vale (A6iii)
- (A7) St Agnes Mining District
- (A8) The Luxulyan Valley (A8i) and Charlestown (A8ii)
- (A9) Caradon Mining District
- (A10) Tamar Valley Mining District (A10i) with Tavistock (A10ii)

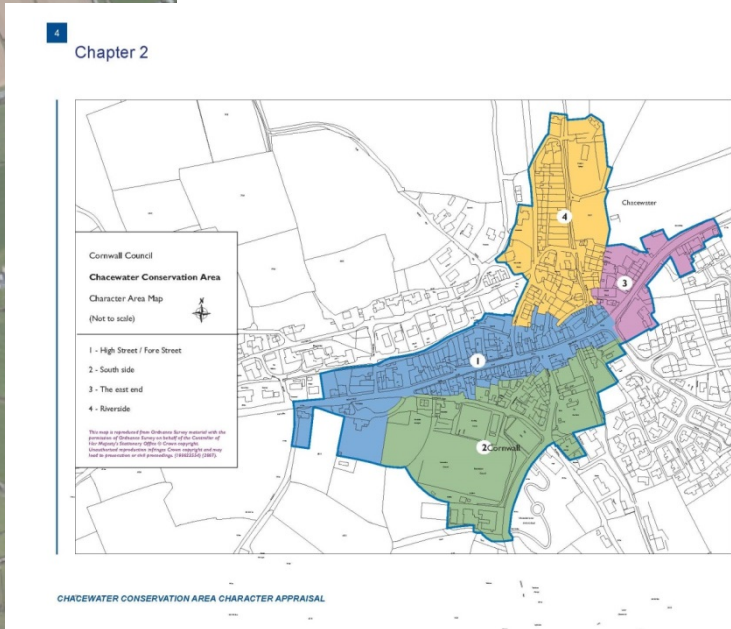
Inscription: 2006
 Criteria: (ii) (iii) (iv)
 Area: 19,710 hectares
 Heritage Ref: 1215
 Grid: N50 8 10 W5 23 1
whc.unesco.org/en/list/1215



Chacewater



Chacewater





Bow fronted shopfronts in Fore Street



Housing on The Terrace



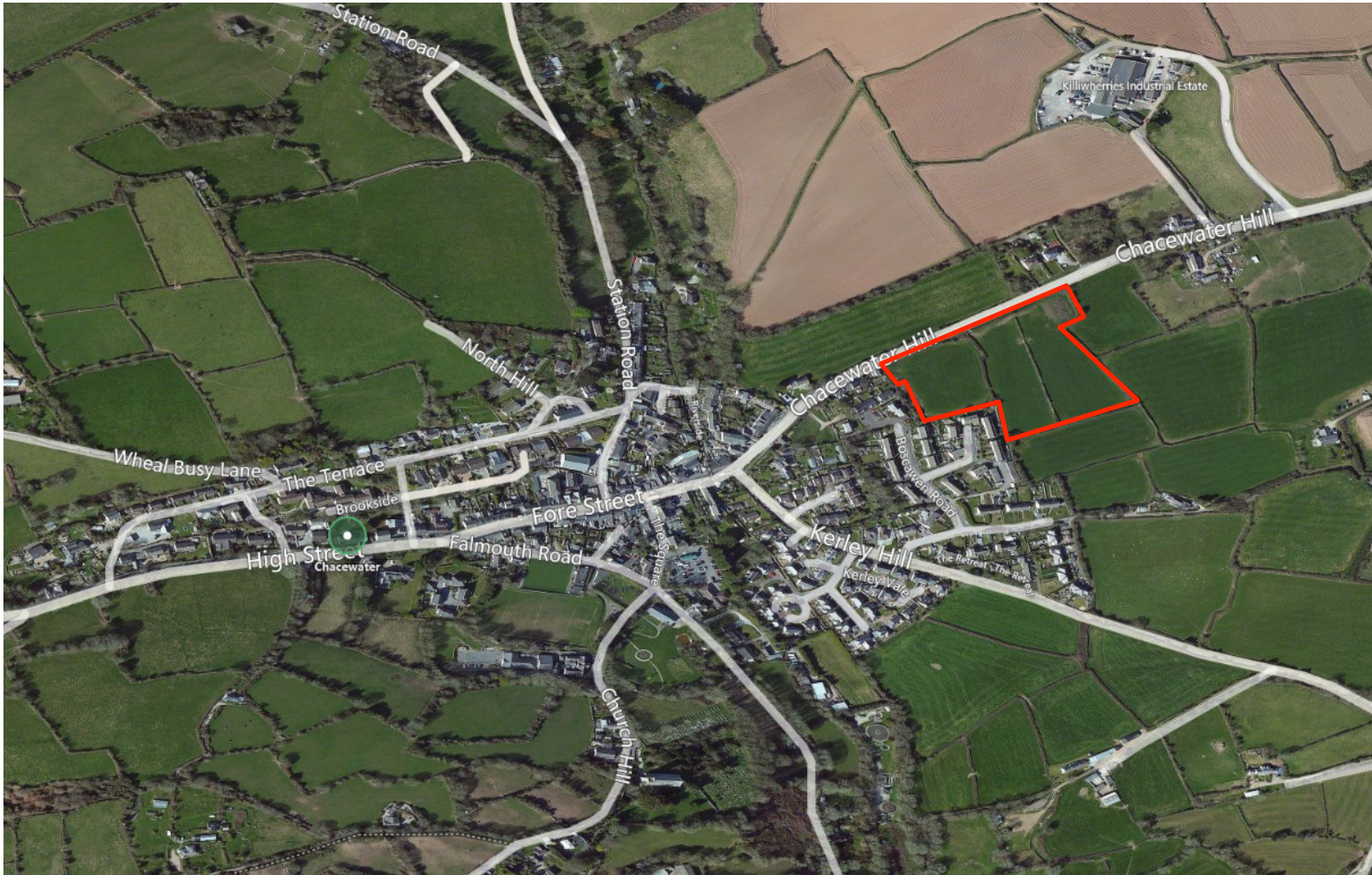
The King's Head, The Square



Chacewater Methodist Church



Application Site



Proposal



NOTES

Do not scale from this drawing. All dimensions are given in meters.
All dimensions are given in meters.
All dimensions are given in meters.
Where applicable, dimensions are given in meters.
This drawing is for information only and does not constitute a contract.
The drawing is for information only and does not constitute a contract.
The drawing is for information only and does not constitute a contract.

REVISIONS

NO.	NOTE	DATE
A	Changes in layout	1/10/2015



SMITHSGORE PLANNING

Job TITLE
Land South of Crosswater Hill

CLIENT
The Treggthen Estate

DRAWING TITLE
Proposed Site Plan

SCALE
1:1000 @ A3

DRAWING NUMBER
SS 1506/11

REV
A

DRAWING STATUS
Planning

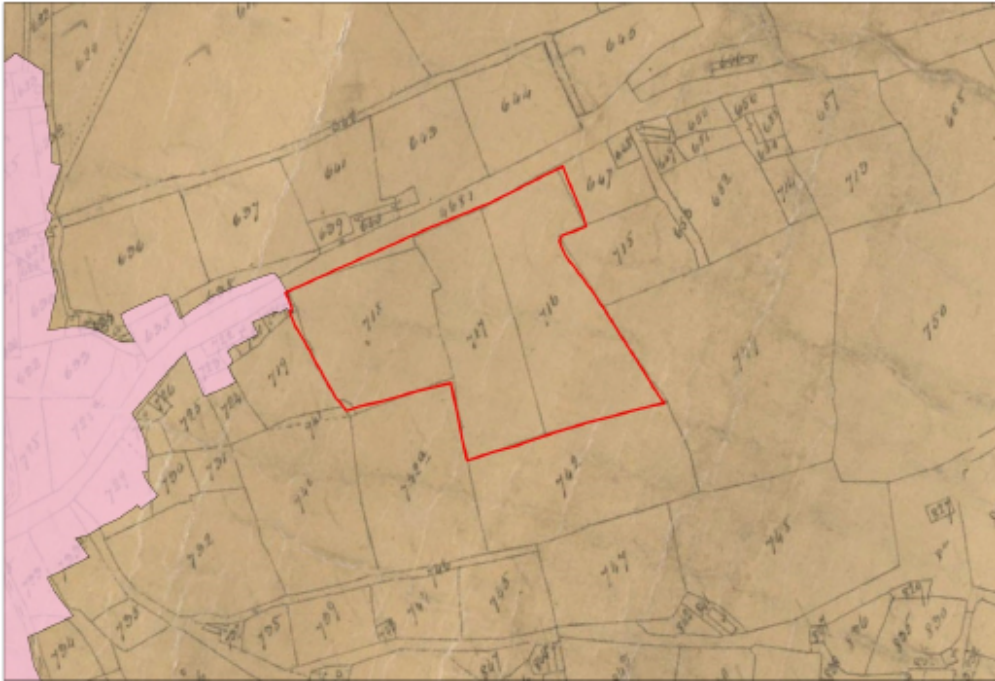
DRAWN
SLP

CHECKED
SLP

DATE
FAC 2015

YORK HOUSE, BLACKBROOK BUSINESS PARK, TALUNTON
SOMERSET, TA1 2PX. TEL 01829 446036, FAX 01829 446261

Field Boundaries



Inspector's View

- **It seems to me that the WHS is made up of all its attributes and that none should be given greater priority than another; it is an integral whole**
- **Severity of the impact would have a major adverse affect as small holdings represent a key attribute of the WHIS**
- **The proposals would represent substantial harm to the significance of the heritage asset**

Lessons

Applicants

- **Robust research into history and significance**
- **Correct application of ICOMOS HIA guidance**
- **Correct understanding of OUV vs significance**

LPAs

- **Robust policies in place which link through to Management Plan**

Thank You

Any Questions?

LICHFIELDS

This publication has been written in general terms and cannot be relied on to cover specific situations. We recommend that you obtain professional advice before acting or refraining from acting on any of the contents of this publication. Lichfields accepts no duty of care or liability for any loss occasioned to any person acting or refraining from acting as a result of any material in this publication. Lichfields is the trading name of Nathaniel Lichfield & Partners Limited. Registered in England, no.2778116. Registered office: 14 Regent's Wharf, All Saints Street, London N1 9RL © Nathaniel Lichfield & Partners Ltd 2017. All rights reserved.