



Pontcysyllte

Safle Treftadaeth Y Byd
World Heritage Site



United Nations
Educational, Scientific and
Cultural Organization



Pontcysyllte Aqueduct and Canal
• inscribed on the World
• Heritage List in 2009



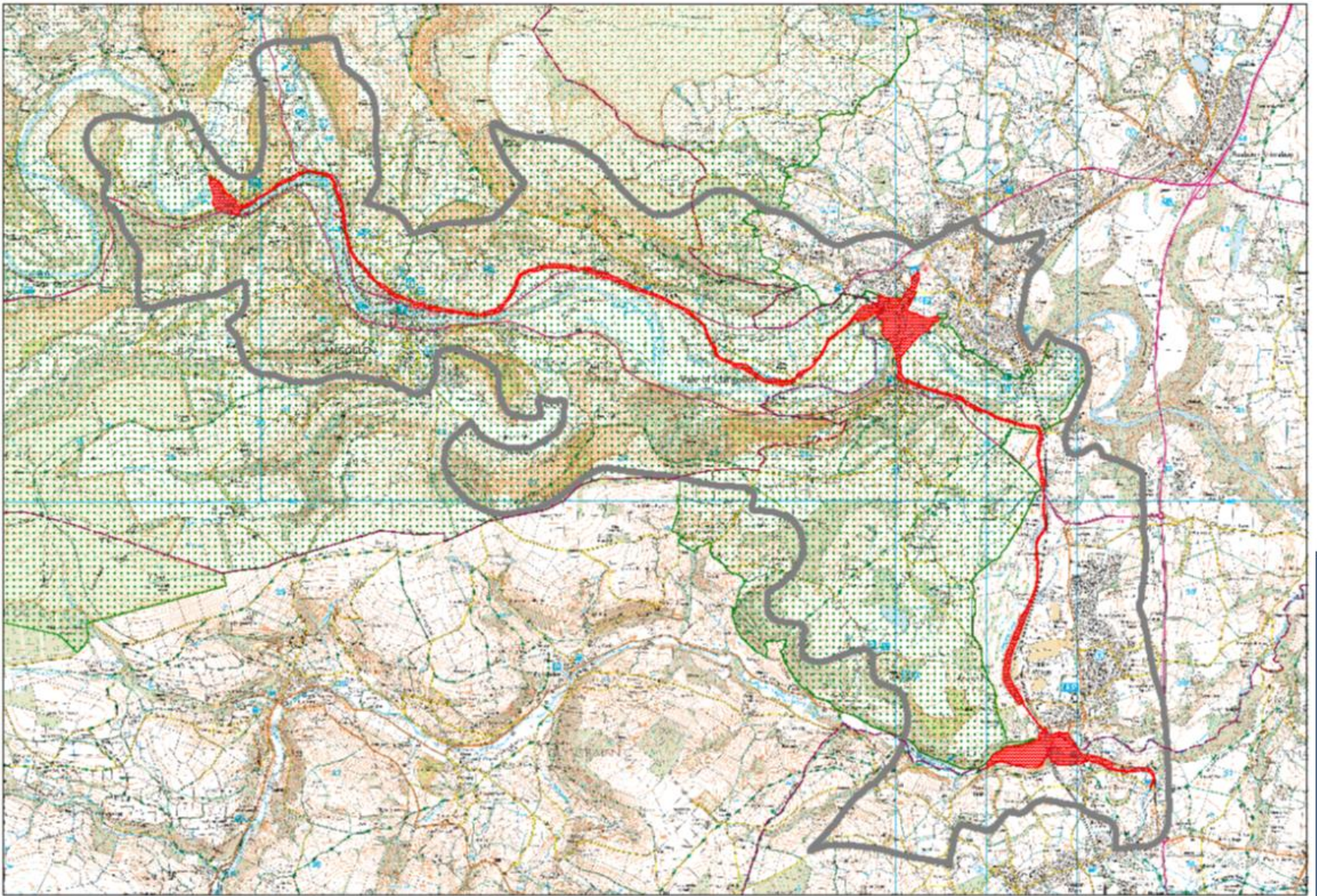
Pontcysyllte Aqueduct and Canal World Heritage Site

Pontcysyllte

Pont - ker - sulth - tay

The Site and the Buffer Zone





This map is reproduced from the Ordnance Survey material with the permission of Ordnance Survey on behalf of the Controller of Her Majesty's Stationery Office © Crown copyright, 100023429, 2016
Allynhyrdder y map hwn o ddeunydd yr Ordnance Survey gyda chaniatâd yr Ordnance Survey ar ran Rheolwr Llyfrfa Eî Mawrhydi © Hawfframl y Goron, 2016

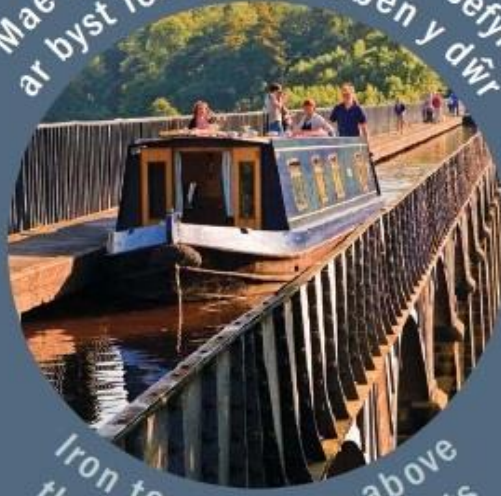
The World Heritage site
The Buffer Zone
The Clwydian Range and Dee Valley Area of Outstanding Natural Beauty

Cymerodd 10 mlynedd i adeiladu'r ddyfrbont ar gost o £38,499



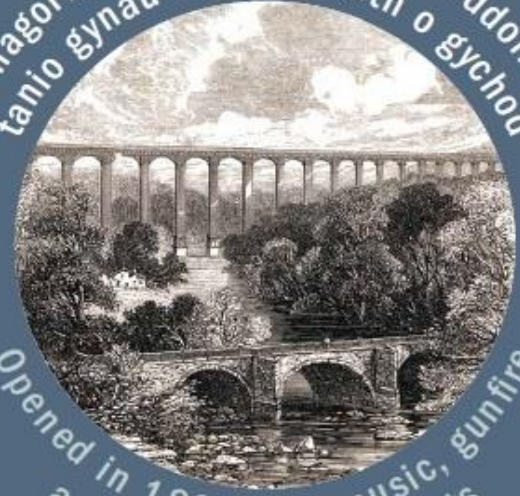
Took 10 years and cost £38,499 to build

Mae llwybr tynnu haearn yn sefyll ar byst fertigol uwchben y dŵr



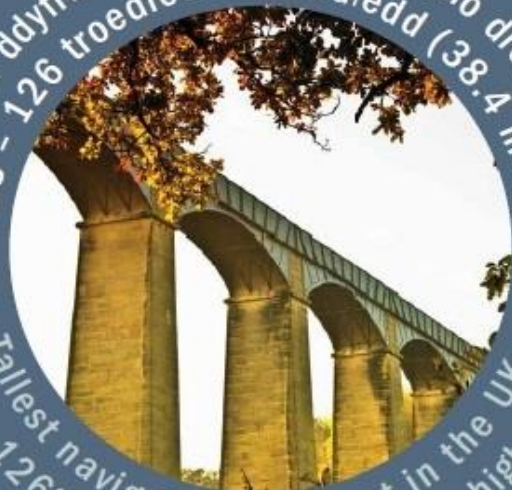
Iron towpath sits above the water on vertical posts

Fe'i hagogwyd ym 1805 yn sŵn cerddoriaeth, tanio gynau a gorymdaith o gychod



Opened in 1805 with music, gunfire and a procession of boats

Dyma'r ddyfrbont uchaf y gellir hwylio drosti yn y DU - 126 troedfedd 8 modfedd (38.4 metr)



Tallest navigable aqueduct in the UK - 126ft 8 inches (38.4 metres) high

Defnyddiwyd brethyn a phlwm i selio uniadau'r haearn bwrw



Used Welsh flannel and lead to seal the joints in the iron trough

Partners working together



Glandŵr Cymru
Canal & River Trust in Wales

Cyngor
sir ddinbych
denbighshire
County Council



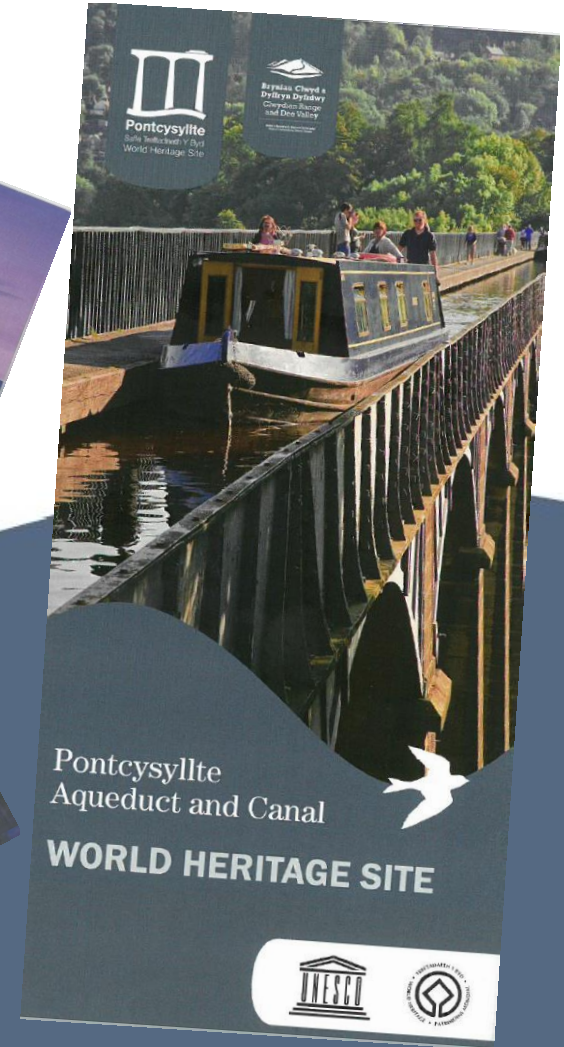
wrexham
COUNTY BOROUGH COUNCIL
CYNGOR BWRDEISTREF SIROL
wreccsam



**Bryniau Clwyd a
Dyffryn Dyfrdwy**
Clwydian Range
and Dee Valley

Ardal o Harddwch Naturiol Eithriadol
Area of Outstanding Natural Beauty

Awareness Raising

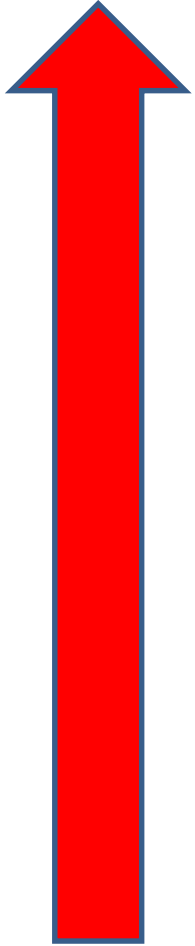


Web and Social Media Presence



Increased Visitor Numbers

330,083 26%



Private Investment



Public Investment



Pontcysyllte

Pont - ker - sulth - tay