

Frontiers of the Roman Empire WHS

Hadrian's Wall



The Management Plan

UNESCO says 'Each nominated property should have an appropriate management plan or other documented management system which must specify how the Outstanding Universal Value of a property should be preserved, preferably through participatory means.'

- Protection
- Understanding
- Sustainable Development

Frontiers of the Roman Empire WHS – Hadrian's Wall



Hadrian's Wall Management x

www.visithadrianswall.co.uk/world-heritage-management/hadrians-wall-management-plan

Hadrian's Wall Country

United Nations Educational, Scientific and Cultural Organization

Frontiers of the Roman Empire

Inscribed on the World Heritage List in 2005

Download a Guide | Contact Us

Facebook Twitter

GO

HADRIAN'S WALL MANAGEMENT PLAN | MANAGEMENT SYSTEM | FRONTIERS OF THE ROMAN EMPIRE | NEWS & VIEWS

Hadrian's Wall Management Plan

Attributes

Description

Supporting Information

Values

Interested Parties

Policies And Actions

Glossary & Abbreviations

The Hadrian's Wall World Heritage Site Management Plan

What is it, and how do I find my way around?

WORLD HERITAGE AND THE FRONTIERS OF THE ROMAN EMPIRE

World Heritage Sites are very special places that are described as having 'outstanding universal value'; they are irreplaceable sources of inspiration and they belong to all of the peoples of the world.

The Sites are 'inscribed' on the **World Heritage List** by UNESCO (the United Nations Educational, Scientific and Cultural Organisation). There are now 1007 World Heritage Sites, worldwide; 28 of them are in the UK and its territories.

Hadrian's Wall is a part of the frontier of a great empire that encompassed much of Europe, the Middle East, and North Africa. It is a symbol of a common heritage. The Wall was inscribed as a World Heritage Site (WHS) in 1987. It is now a component part of a much larger and more ambitious Site: the **Frontiers of the Roman Empire (FRE)**. This is a 'transnational' Site: the result of the German Limes being added in 2005, and the Antonine Wall (between the Forth and the Clyde, in Scotland) in 2008.

However, these three only formed a small proportion of the frontiers of the Empire at its greatest extent, in the second century AD. The intention is that other stretches of the frontier (which lie in several further countries) will be gradually designated for their outstanding cultural value; this will make the Frontiers of the Roman Empire one of the largest World Heritage Sites of all.

The garrison of the Wall was a multi-cultural one, drawing on communities from across the Roman world. This history binds us all together, and so even these military remains can contribute to the **UNESCO Manifesto 2000 for a Culture of Peace and Non-Violence** that takes the culture of peace into daily life as an individual commitment and responsibility.

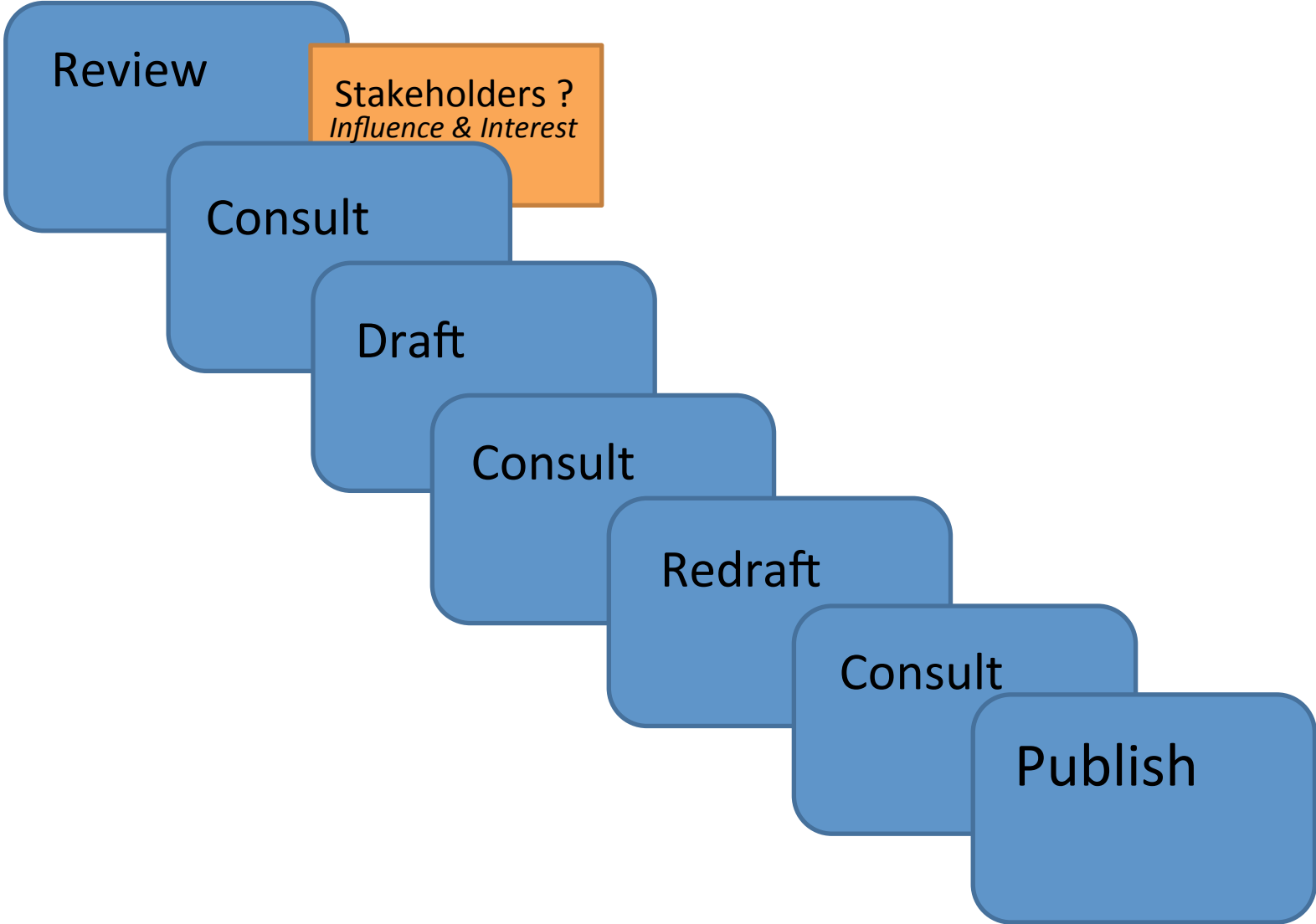
THE MANAGEMENT PLAN

Each World Heritage Site has to have a Management Plan that sets out why the place is special; what will be done to conserve and enhance it over a five-year period, and what will be done to explain its significance to visitors. This is the fourth edition of the Management Plan for the Hadrian's Wall World Heritage Site. The others were produced in 1996 - the first such Plan in the UK - in 2002, and in 2008*

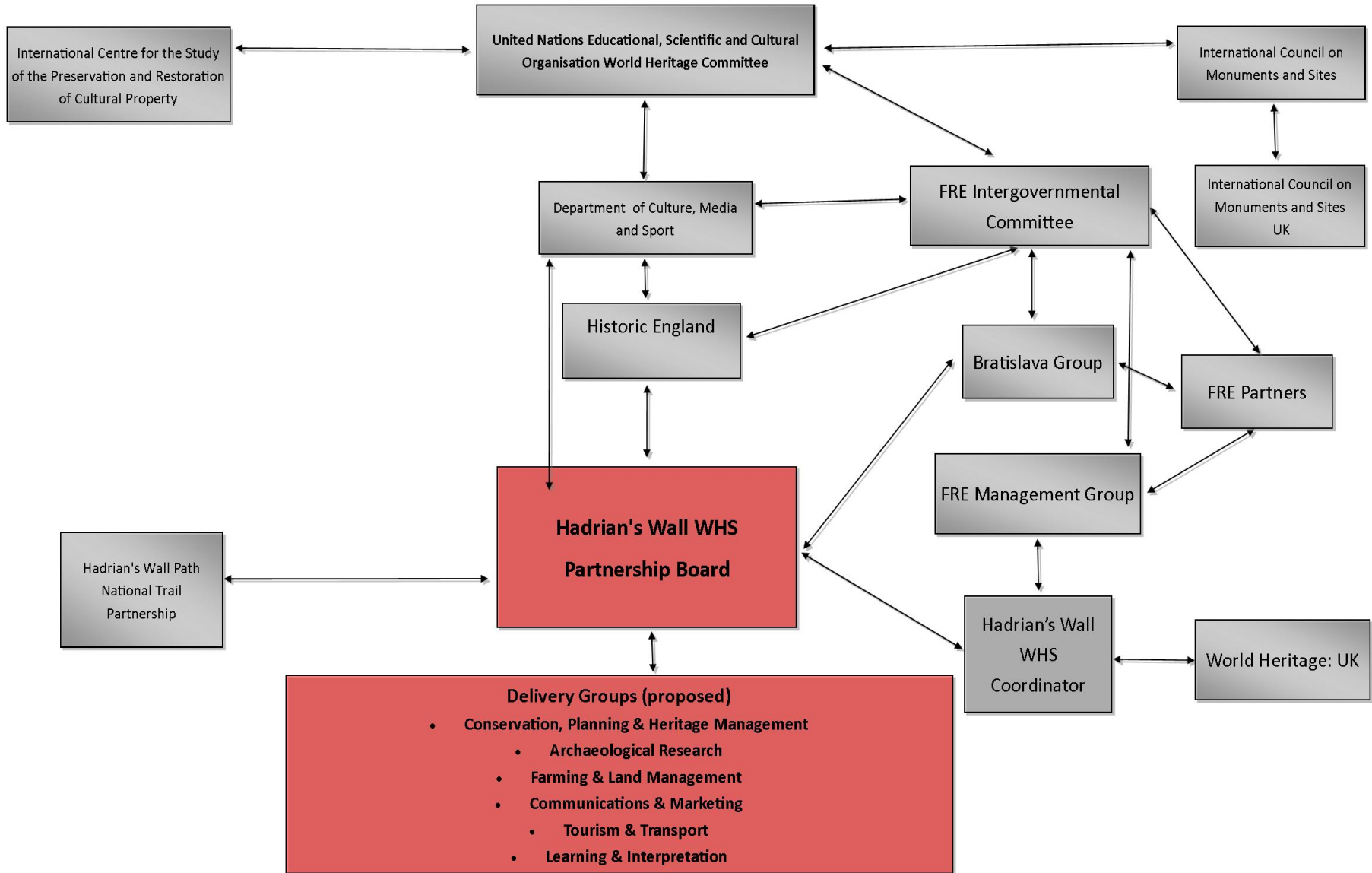


www.visithadrianswall.co.uk/world-heritage-management/hadrians-wall-management-plan

10:42 22/04/2015



Frontiers of the Roman Empire WHS (Hadrian's Wall) Organisational Structure



Frontiers of the Roman Empire WHS – Hadrian's Wall

Deliverable

Practical

Transparent

Engaging

Accessible

Value


Adaptable

Conversational

Focus

Useful

Frontiers of the Roman Empire WHS – Hadrian's Wall



Hadrian's Wall Management x

www.visithadrianswall.co.uk/world-heritage-management/hadrians-wall-management-plan

Hadrian's Wall Country

United Nations Educational, Scientific and Cultural Organization

Frontiers of the Roman Empire

Inscribed on the World Heritage List in 2005

Download a Guide | Contact Us

Facebook Twitter

GO

HADRIAN'S WALL MANAGEMENT PLAN | MANAGEMENT SYSTEM | FRONTIERS OF THE ROMAN EMPIRE | NEWS & VIEWS

Hadrian's Wall Management Plan

Attributes

Description

Supporting Information

Values

Interested Parties

Policies And Actions

Glossary & Abbreviations

The Hadrian's Wall World Heritage Site Management Plan

What is it, and how do I find my way around?

WORLD HERITAGE AND THE FRONTIERS OF THE ROMAN EMPIRE

World Heritage Sites are very special places that are described as having 'outstanding universal value'; they are irreplaceable sources of inspiration and they belong to all of the peoples of the world.

The Sites are 'inscribed' on the **World Heritage List** by UNESCO (the United Nations Educational, Scientific and Cultural Organisation). There are now 1007 World Heritage Sites, worldwide; 28 of them are in the UK and its territories.

Hadrian's Wall is a part of the frontier of a great empire that encompassed much of Europe, the Middle East, and North Africa. It is a symbol of a common heritage. The Wall was inscribed as a World Heritage Site (WHS) in 1987. It is now a component part of a much larger and more ambitious Site: the **Frontiers of the Roman Empire (FRE)**. This is a 'transnational' Site: the result of the German Limes being added in 2005, and the Antonine Wall (between the Forth and the Clyde, in Scotland) in 2008.

However, these three only formed a small proportion of the frontiers of the Empire at its greatest extent, in the second century AD. The intention is that other stretches of the frontier (which lie in several further countries) will be gradually designated for their outstanding cultural value; this will make the Frontiers of the Roman Empire one of the largest World Heritage Sites of all.

The garrison of the Wall was a multi-cultural one, drawing on communities from across the Roman world. This history binds us all together, and so even these military remains can contribute to the **UNESCO Manifesto 2000 for a Culture of Peace and Non-Violence** that takes the culture of peace into daily life as an individual commitment and responsibility.

THE MANAGEMENT PLAN

Each World Heritage Site has to have a Management Plan that sets out why the place is special; what will be done to conserve and enhance it over a five-year period, and what will be done to explain its significance to visitors. This is the fourth edition of the Management Plan for the Hadrian's Wall World Heritage Site. The others were produced in 1996 - the first such Plan in the UK - in 2002, and in 2008*



www.visithadrianswall.co.uk/world-heritage-management/hadrians-wall-management-plan

10:42 22/04/2015

Objectives (Year 1)

Objective 1

Policy 1a - Opportunities should be taken to raise awareness of World Heritage, and of UNESCO's values and aspirations.

Policy 1b - Hadrian's Wall should contribute to the development of common standards of identification, recording, research, protection, conservation, management, presentation, promotion, and understanding of each component part of the Frontiers of the Roman Empire World Heritage Site.

Policy 1g - The Delivery Groups will consult widely, if appropriate.

Policy 1h - Partnership Board reports on the development and implementation of the Plan should be regular and accessible.

Objective 3

Policy 3a - When considering proposals for development, local planning authorities should ensure that they protect or better reveal the significance of the OUV of the World Heritage Site, through the adoption and application of high standards of decision-making, that are consistent throughout the World Heritage Site.

Objective 6

Policy 6b - Emergency planners should be aware of the World Heritage Site, and emergency services should take it into account in their response to an incident.

Objective 7

Policy 7a - There should be regular monitoring of the condition of all elements of the World Heritage Site, and maintenance should be prioritised accordingly.

Objective 10

Policy 10a - The provision and use of sustainable transport to and within the World Heritage Site should be actively promoted.

Objective 11

Policy 11d - Interpretation of the World Heritage Site must be based on authoritative and up-to date information; it should explain the meaning and significance of each place, be thought-provoking, and engender greater enjoyment of and care for the heritage by the visitor.

Objective 13

Policy 13a- Opportunities for greater participation in, and engagement with, the World Heritage Site by local individuals, by supporters' groups, and by communities, should be developed and implemented.

Policy 13b - Managers in the World Heritage Site should engage with communities in order to gain a better understanding of their interests, skills and aspirations, especially during the planning of any new initiative.

Policy 13c - The use of digital media for communication should be maximised and used to complement face-to-face discussion.

Objective 14

Policy 14a -Seasonal and coordinated marketing and communication should be used to facilitate visits and to increase the value of tourism in and around the World Heritage Site, while enhancing understanding of the OUV, of the steps taken for its care, and of World Heritage status.

Actions (Year 1)

- **Develop a local design guide for the use of the UNESCO logo which should include a summary of UNESCO values..**
- **Agree a common terminology or glossary, aiding communication and complementary management.**
- **The Coordinator will support, attend, and contribute to the World Heritage Site Management Group and the Bratislava Group, as appropriate.**
- **Establish and maintain a consultation database.**
- **Update Hadrian's Wall Management Plan website on a regular basis.**
- **Produce a regular e-newsletter/report.**
- **Encourage regular sharing in the World Heritage Site web space.**
- **Promote use of the World Heritage Site for scenario training by the emergency services to aid familiarisation.**
- **Annually check/update Local Resilience Fora with contact details.**
- **Further develop and review an effective volunteer monitoring programme for the World Heritage Site.**
- **Establish a process for the identification and implementation of priority work.**
- **Review best practice in sustainable transport solutions.**
- **Identify and disseminate the strands of new research that should underpin any revised interpretation scheme.**
- **Proactively encourage community projects and programmes to utilise and reference the World Heritage Site.**
- **Benchmark existing initiatives and evaluate future opportunities for community engagement with the World Heritage Site.**
- **Establish an online forum or network for communities and individuals to celebrate and discuss the World Heritage Site and to share experiences.**
- **Establish a sustainable framework for the marketing of the World Heritage Site.**
- **Include conservation themes and advice within marketing messages, using positive imagery.**

Frontiers of the Roman Empire WHS – Hadrian's Wall

The screenshot shows a web browser window with the URL <http://hadrianswall.etwp.net>. The page is titled "Editing Page 'Frontiers of the Roman Empire'". The interface includes a sidebar with a "Sites" tree and a "Media" section. The main content area is a form for editing the page, with tabs for "General", "Content", "Media / Page Settings", "Navigations", and "Save Audit". The "General" tab is active, showing fields for "Parent Page", "Page Template", "Page Title", "Nav Link Text", "Nav Link Description", "Nav Thumbnail", "Page URL", "XHTML Class", "Access Key", "Redirect URL", "Non-User-Value Content", "Product", "Page Title Type", "Title Override", "Meta Description", "Meta Keywords", "Featured Description", "Requires Contact Login", "Requires Consumer Login", "Password", "Active on Live", "Active on Stage", and "Page Groups". The "Page Title" is "Frontiers of the Roman Empire" and the "Page URL" is "frontiers-of-the-roman-empire". The "Page Groups" section shows three groups: "HW Live Editors", "HW Stage Editors", and "John Scott Editor", all of which are checked. The "Active on Stage" checkbox is also checked. The "Publish" button is visible at the bottom of the form. The sidebar shows a tree structure with "Frontiers of the Roman Empire" selected. The "Media" section shows "Content Search" and "Content Aggregator". The bottom of the browser window shows the Windows taskbar with the time 10:55 and date 22/04/2015.

Enterprise Tourism Web Platform v1.4

Sites

- Things to Do
- tulliehouse
- Wall Face 21 August - 9 November
- Way Finder
- Welcome to Hadrian's Wall Learning
- Welcome to Hadrian's Wall World Heritage Management
 - Frontiers of the Roman Empire
 - Add Page
 - Hadrian's Wall Management Plan
 - Management System
 - News & Views
 - Add Page
 - What's On

Media

Content Search Content Aggregator

Editing Page 'Frontiers of the Roman Empire'

Save + Quit Don't Save Save Now

General Content Media / Page Settings Navigations Save Audit

Parent Page Welcome to Hadrian's Wall World Heritage Management [edit]

Page Template HW - World Heritage Management

Page Title Frontiers of the Roman Empire

Nav Link Text Frontiers of the Roman Empire

Nav Link Description Frontiers of the Roman Empire

Nav Thumbnail None [Preview Image]

Page URL frontiers-of-the-roman-empire

XHTML Class

Access Key

Redirect URL

Non-User-Value Content

Product [Search] [Clear]

Page Title Type None

Title Override

Meta Description

Meta Keywords

Featured Description

Requires Contact Login

Requires Consumer Login

Password

Active on Live

Active on Stage

[Publish]

Page Groups (if none applied, then page is not accessible by users with page group restrictions)

- HW Live Editors
- HW Stage Editors
- John Scott Editor

Delete Save + Quit Don't Save Save Now

Logout

10:55 22/04/2015