



**CORNISH MINING**  
WORLD HERITAGE

*Our mining culture  
shaped your world*



**Cornwall and West Devon Mining Landscape WHS  
UNESCO reactive monitoring Missions 2013 and 2015**



# CORNISH MINING WORLD HERITAGE

Our mining culture  
shaped your world



6°0'0"W

5°0'0"W

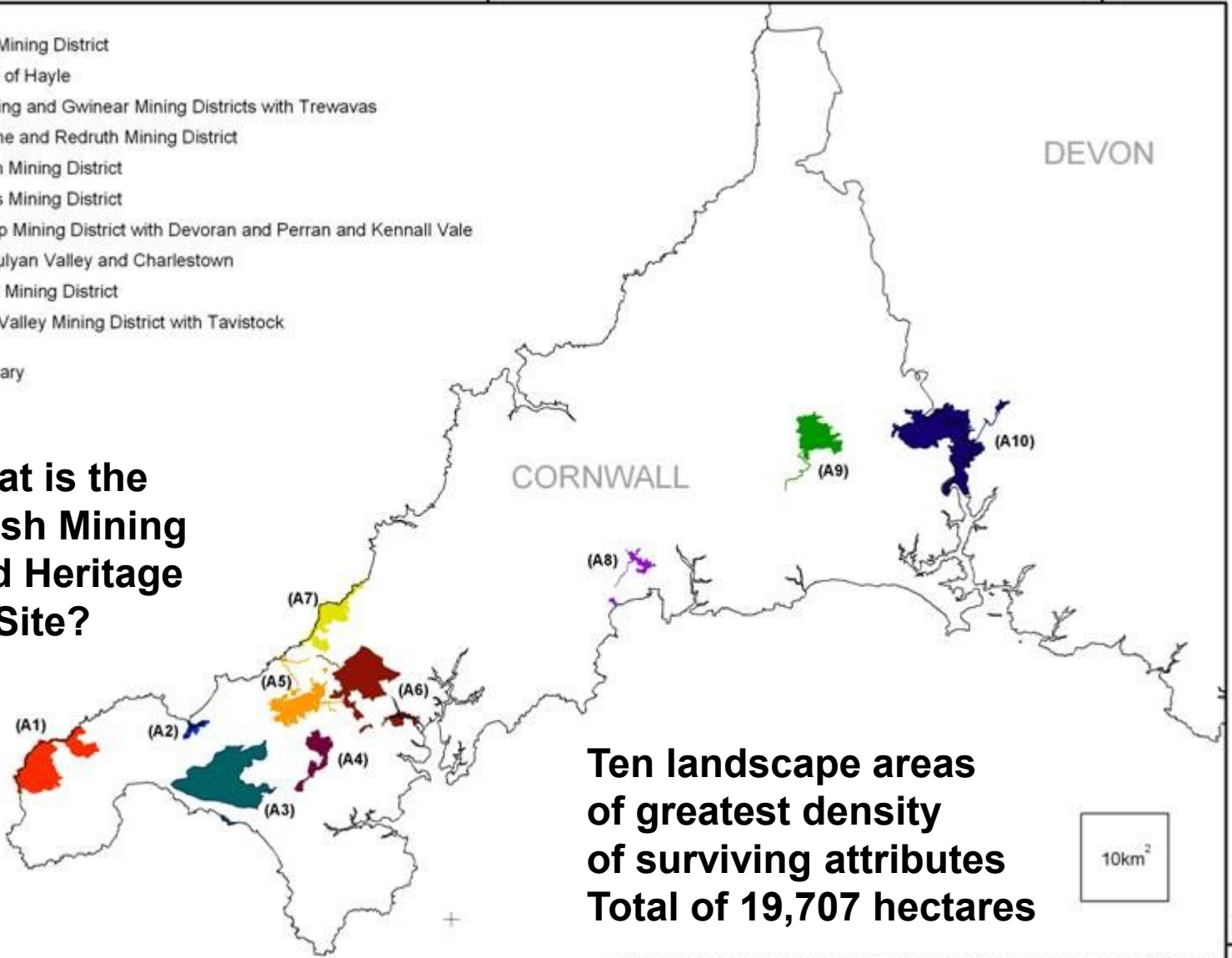
4°0'0"W

-  (A1) St. Just Mining District
  -  (A2) The Port of Hayle
  -  (A3) Tregonning and Gwinear Mining Districts with Trewavas
  -  (A5) Camborne and Redruth Mining District
  -  (A4) Wendron Mining District
  -  (A7) St Agnes Mining District
  -  (A6) Gwennap Mining District with Devoran and Perran and Kennall Vale
  -  (A8) The Luxulyan Valley and Charlestown
  -  (A9) Caradon Mining District
  -  (A10) Tamar Valley Mining District with Tavistock
-  County boundary

DEVON

CORNWALL

**What is the  
Cornish Mining  
World Heritage  
Site?**



**Ten landscape areas  
of greatest density  
of surviving attributes  
Total of 19,707 hectares**

50°0'0"N

6°0'0"W

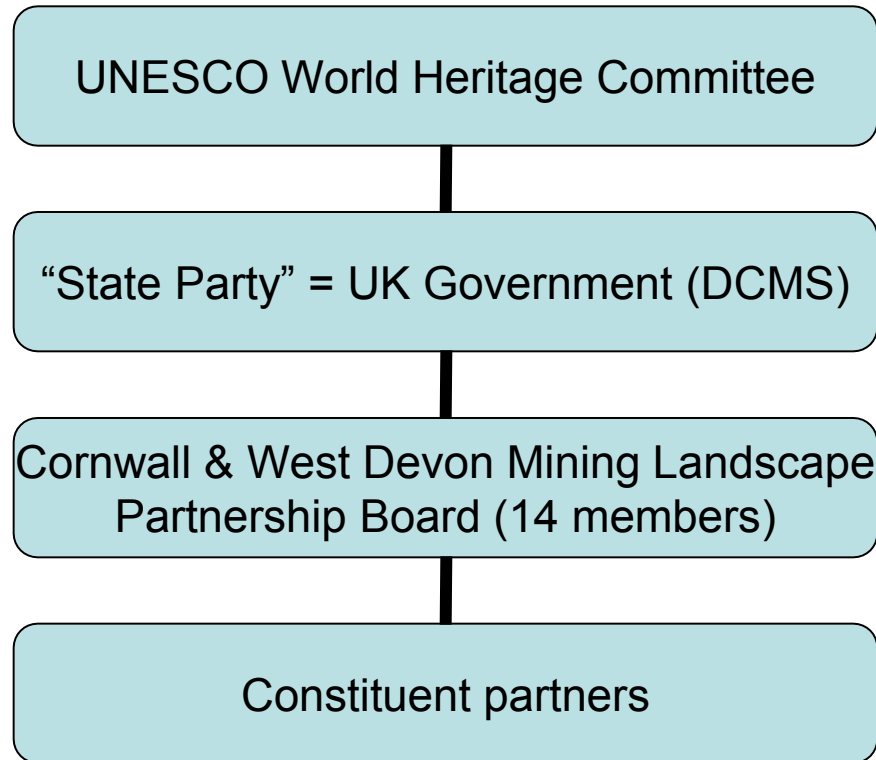
5°0'0"W

4°0'0"W

50°0'0"N



To provide a structure for this complexity, governance arrangements bring together the principal management bodies in a WHS Partnership Board



The principal management organisations act collectively to deliver the agreed **Management Plan**, but are also individually answerable for the management of the Site in their ownership/control, in line with Management Plan policies.



**Motivations for the 2013 Mission;** UNESCO notified in SoC 2012 of:

- Resumption of mining at South Crofty, Pool ( consented with CCHES and EH input Nov 2010)
- Supermarket on South Quay, Hayle Harbour (consented March 2012 after objection by CCHES and EH = Section 172 notification)

Not debated at World Heritage Committee 2012; discussed at WHC 2013

Terms of reference – extensive, especially challenging to cover in 5 days  
- other major developments, conservation of the whole Site





**December 2013 Mission report conclusions:**

Other issues – overall management good, but raised issues related to UK planning system (and other issues not covered in ToR, referring back to 2006 ICOMOS report)

South Crofty – referred to wider debate still underway

Hayle – principles of development and supermarket accepted, but mass & design = significant adverse effect on OUV, recommended adding to “In Danger List”

Partnership conclusion – impacts don’t meet IDL triggers





## World Heritage Committee 2014

- Didn't accept DL recommendation – in part because DL best used where it can effect change, not possible on a consented scheme
- ICOMOS/ICCROM asked for another Mission to assess impact and consider mitigations after build completed

Webcast of debate:

<http://new.livestream.com/accounts/2255445/events/3100333/>

plenary session four, starts 1hr and 55 mins to 2hr 28mins.



2015 Mission report not issued yet, but measures discussed include:

- Statement from Cornwall Council on how it will deal with WHS cases in future
- CMWHS Partnership SPD and training programme for members and case officers
- Letter from DCMS referencing issues relevant to all UK Sites



Additional specialist planning advice resource for CMWHS team



The SPD will underpin the protection of OUV and its setting by:

- consolidating the descriptions of the attributes of OUV summarised in the Management Plan 2013-18 and its appendices and the Statement of Outstanding Universal Value (SOUV) as adopted by UNESCO
- outlining the approach for assessing development affecting OUV that is compatible with EH practice as well as ICOMOS guidance, but also provides a scaled down approach where a full HIA is not applicable
- establishing criteria to be applied in determining planning applications for development within the setting of the World Heritage Site
- encouraging early and effective consultation between Local Planning Authorities and English Heritage
- guiding decisions on planning appeals and enforcement





**issues specific to the CMWHS** that will be addressed:

- establishing local policies and guidance for issues not covered by NPPF, eg gpd rights for removal of materials from mineral working deposits
- use of article 4 directions and local development orders to protect character, and define appropriate materials and design factors

**issues arising from the UNESCO Reactive Monitoring Mission** report (Dec 2013) will also be responded to:

- managing large-scale development proposals, including adequate consideration of the heritage advice received and the extension of timelines allocated for the review of development applications – Planning Performance Agreements
- Developing greater policy guidance on significant underground heritage as far as may be practicable to assists owners or developers to understand heritage impacts on the underground context of the WHS (not OUV)



**Cornwall and West Devon Mining Landscape WHS**